



ELECTRONIC COPY

LABORATORY GROWN DIAMOND REPORT

July 21, 2022
IGI Report Number LG537235443
Description LABORATORY GROWN DIAMOND
Shape and Cutting Style CUT CORNERED RECTANGULAR MODIFIED BRILLIANT
Measurements 8.78 X 6.29 X 4.02 MM

GRADING RESULTS

Carat Weight 1.93 CARAT
Color Grade F
Clarity Grade VVS 1

ADDITIONAL GRADING INFORMATION

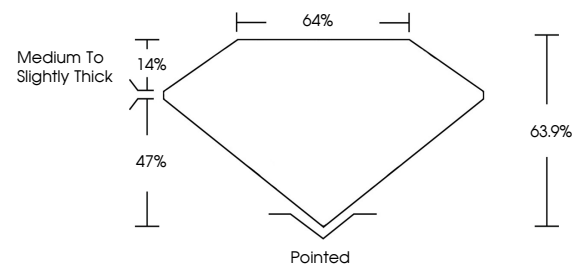
Polish EXCELLENT
Symmetry EXCELLENT
Fluorescence NONE

Inscription(s) LABGROWN IGI LG537235443

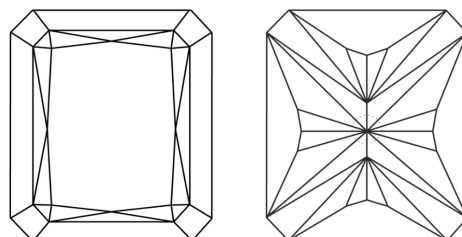
Comments: As Grown - No indication of post-growth treatment. This Laboratory Grown Diamond was created by Chemical Vapor Deposition (CVD) growth process. Type IIa

LG537235443

PROPORTIONS



CLARITY CHARACTERISTICS

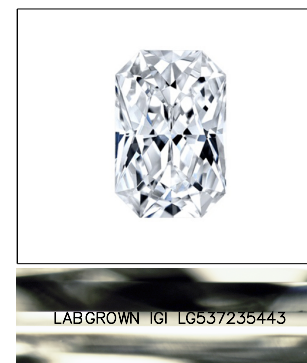


KEY TO SYMBOLS

Red symbols indicate internal characteristics. Green symbols indicate external characteristics.

GRADING SCALES

Table with 2 rows and 5 columns. Row 1: COLOR GRADING SCALE (CL, NC, FT, VLT, LT) with corresponding descriptions. Row 2: CLARITY (10x) GRADING SCALE (FL, IF, VVS, VS, SI, I) with corresponding descriptions.

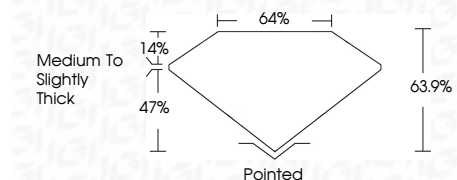


LASERSCRIBE SM Sample Image Used

July 21, 2022
IGI Report Number LG537235443
Description LABORATORY GROWN DIAMOND
Shape and Cutting Style CUT CORNERED RECTANGULAR MODIFIED BRILLIANT
Measurements 8.78 X 6.29 X 4.02 MM

GRADING RESULTS

Carat Weight 1.93 CARAT
Color Grade F
Clarity Grade VVS 1



ADDITIONAL GRADING INFORMATION

Polish EXCELLENT
Symmetry EXCELLENT
Fluorescence NONE
Inscription(s) LABGROWN IGI LG537235443

Comments: As Grown - No indication of post-growth treatment. This Laboratory Grown Diamond was created by Chemical Vapor Deposition (CVD) growth process. Type IIa



July 21, 2022
IGI Report No LG537235443
CUT CORNERED RECT. MODIFIED
Carat Weight 1.93 CARAT
Color Grade F
Clarity Grade VVS 1
Depth 63.9%
Table 64%
Girdle Medium to Slightly Thick
Culet Pointed
Polish EXCELLENT
Symmetry EXCELLENT
Fluorescence NONE
Inscription(s) LABGROWN IGI LG537235443
Comments: As Grown - No indication of post-growth treatment. This Laboratory Grown Diamond was created by Chemical Vapor Deposition (CVD) growth process. Type IIa