



ELECTRONIC COPY

LABORATORY GROWN DIAMOND REPORT

July 20, 2022
 IGI Report Number **LG537235553**
 Description **LABORATORY GROWN
DIAMOND**
 Shape and Cutting Style **OVAL BRILLIANT**
 Measurements **10.84 X 7.82 X 4.88 MM**

GRADING RESULTS

Carat Weight **2.57 CARATS**
 Color Grade **E**
 Clarity Grade **VVS 1**

ADDITIONAL GRADING INFORMATION

Polish **EXCELLENT**
 Symmetry **EXCELLENT**
 Fluorescence **NONE**

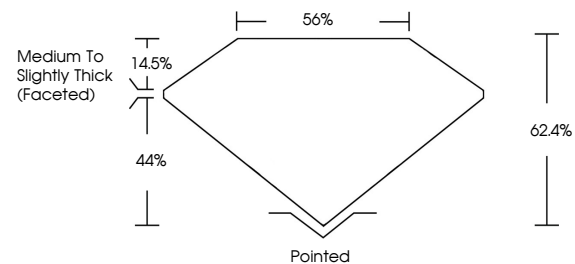
Inscription(s) **LABGROWN IGI LG537235553**

Comments: As Grown - No indication of post-growth treatment.

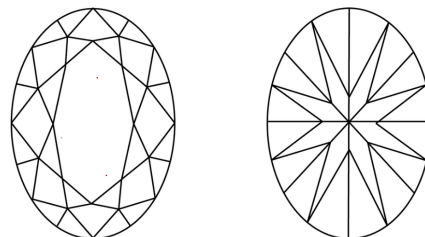
This Laboratory Grown Diamond was created by Chemical Vapor Deposition (CVD) growth process. Type IIa

LG537235553

PROPORTIONS



CLARITY CHARACTERISTICS

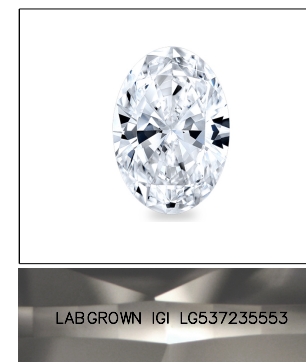


KEY TO SYMBOLS

Red symbols indicate internal characteristics.
 Green symbols indicate external characteristics.

GRADING SCALES

COLOR GRADING SCALE	CL	NC	FT	VL	LT	
	COLORLESS D-F	NEAR COLORLESS G-J	FAINT K-M	VERY LIGHT N-R	LIGHT S-Z	
CLARITY (10x) GRADING SCALE	FL	IF	VVS	VS	SI	I
	FLAWLESS INTERNALLY FLAWLESS	VERY VERY SLIGHTLY INCLUDED	VERY SLIGHTLY INCLUDED	SLIGHTLY INCLUDED	INCLUDED	

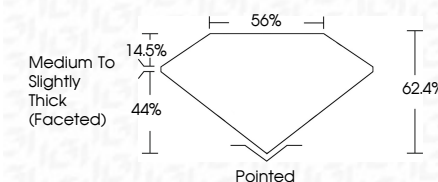


LABGROWN IGI LG537235553

LASERSCRIBESM

Sample Image Used

July 20, 2022
 IGI Report Number **LG537235553**
 Description **LABORATORY GROWN
DIAMOND**
 Shape and Cutting Style **OVAL BRILLIANT**
 Measurements **10.84 X 7.82 X 4.88 MM**
GRADING RESULTS
 Carat Weight **2.57 CARATS**
 Color Grade **E**
 Clarity Grade **VVS 1**



ADDITIONAL GRADING INFORMATION

Polish **EXCELLENT**
 Symmetry **EXCELLENT**
 Fluorescence **NONE**
 Inscription(s) **LABGROWN IGI LG537235553**

Comments: As Grown - No indication of post-growth treatment.
 This Laboratory Grown Diamond was created by Chemical Vapor Deposition (CVD) growth process. Type IIa



IGI

July 20, 2022	IGI Report No LG537235553	OVAL BRILLIANT	10.84 X 7.82 X 4.88 MM	2.57 CARATS	E	VVS 1	62.4%	56%	Medium To Slightly Thick (Faceted)	Pointed	EXCELLENT	EXCELLENT	NONE	LABGROWN IGI LG537235553	Comments:	As Grown - No indication of post-growth treatment. The Laboratory Grown Diamond was created by Chemical Vapor Deposition (CVD) growth process. Type IIa
		Carat Weight				Color Grade					Polish	Symmetry	Fluorescence	Inscription(s)		