



ELECTRONIC COPY

LABORATORY GROWN DIAMOND REPORT

August 16, 2022
 IGI Report Number **LG539214889**
 Description **LABORATORY GROWN
DIAMOND**
 Shape and Cutting Style **OVAL BRILLIANT**
 Measurements **11.24 X 7.98 X 4.88 MM**

GRADING RESULTS

Carat Weight **2.68 CARATS**
 Color Grade **E**
 Clarity Grade **VVS 1**

ADDITIONAL GRADING INFORMATION

Polish **EXCELLENT**
 Symmetry **EXCELLENT**
 Fluorescence **NONE**

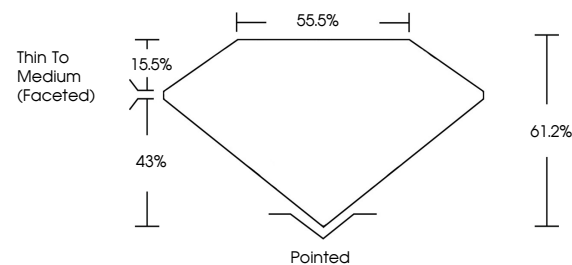
Inscription(s) **LABGROWN IGI LG539214889**

Comments: As Grown - No indication of post-growth treatment.

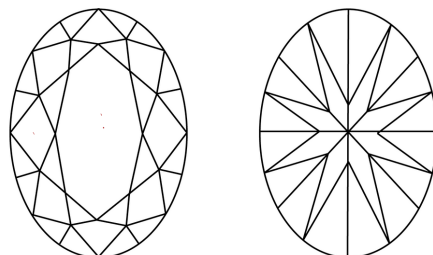
This Laboratory Grown Diamond was created by Chemical Vapor Deposition (CVD) growth process. Type IIa

LG539214889

PROPORTIONS



CLARITY CHARACTERISTICS



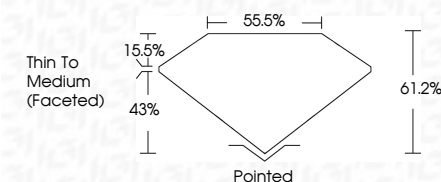
KEY TO SYMBOLS

Red symbols indicate internal characteristics.
 Green symbols indicate external characteristics.

GRADING SCALES

| | | | | | | |
|-----------------------------|------------------------------|-----------------------------|------------------------|-------------------|-----------|----------|
| COLOR GRADING SCALE | CL | NC | FT | VL | LT | |
| | COLORLESS D-F | NEAR COLORLESS G-J | FAINT K-M | VERY LIGHT N-R | LIGHT S-Z | |
| CLARITY (10x) GRADING SCALE | FL | IF | VVS | VS | SI | I |
| | FLAWLESS INTERNALLY FLAWLESS | VERY VERY SLIGHTLY INCLUDED | VERY SLIGHTLY INCLUDED | SLIGHTLY INCLUDED | INCLUDED | INCLUDED |

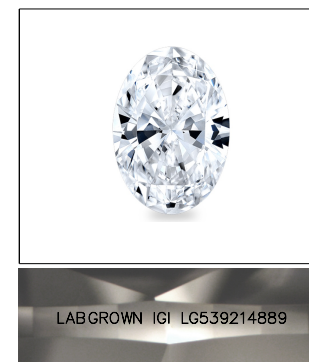
August 16, 2022
 IGI Report Number **LG539214889**
 Description **LABORATORY GROWN
DIAMOND**
 Shape and Cutting Style **OVAL BRILLIANT**
 Measurements **11.24 X 7.98 X 4.88 MM**
GRADING RESULTS
 Carat Weight **2.68 CARATS**
 Color Grade **E**
 Clarity Grade **VVS 1**



ADDITIONAL GRADING INFORMATION

Polish **EXCELLENT**
 Symmetry **EXCELLENT**
 Fluorescence **NONE**
 Inscription(s) **LABGROWN IGI LG539214889**

Comments: As Grown - No indication of post-growth treatment.
 This Laboratory Grown Diamond was created by Chemical Vapor Deposition (CVD) growth process. Type IIa



LABGROWN IGI LG539214889

LASERSCRIBESM

Sample Image Used



| | | | | | | | | | | | | | | |
|---------------------------|---------------------------|------------------------|-------------|-------|-------|-------|--------------------------|----------|--------------|----------------|-----------|--|-----------|--|
| August 16, 2022 | IGI Report No LG539214889 | 2.68 CARATS | E | VVS 1 | 61.2% | 55.5% | Thin To Medium (Faceted) | Pointed | EXCELLENT | EXCELLENT | NONE | LABGROWN IGI LG539214889 | Comments: | As Grown - No indication of post-growth treatment. The Laboratory Grown Diamond was created by Chemical Vapor Deposition (CVD) growth process. Type IIa |
| IGI Report No LG539214889 | OVAL BRILLIANT | 11.24 X 7.98 X 4.88 MM | 2.68 CARATS | VVS 1 | 61.2% | 55.5% | Thin To Medium (Faceted) | Pointed | EXCELLENT | EXCELLENT | NONE | LABGROWN IGI LG539214889 | Comments: | As Grown - No indication of post-growth treatment. The Laboratory Grown Diamond was created by Chemical Vapor Deposition (CVD) growth process. Type IIa |
| Carat Weight | Color Grade | Clarity Grade | Depth | Table | Grade | Culet | Polish | Symmetry | Fluorescence | Inscription(s) | Comments: | As Grown - No indication of post-growth treatment. The Laboratory Grown Diamond was created by Chemical Vapor Deposition (CVD) growth process. Type IIa | | |