



**ELECTRONIC COPY**

**LABORATORY GROWN DIAMOND REPORT**

August 16, 2022  
 IGI Report Number **LG539219534**  
 Description **LABORATORY GROWN  
DIAMOND**  
 Shape and Cutting Style **CUT CORNERED RECTANGULAR  
MODIFIED BRILLIANT**  
 Measurements **10.63 X 7.44 X 4.76 MM**

**GRADING RESULTS**

Carat Weight **3.23 CARATS**  
 Color Grade **F**  
 Clarity Grade **VVS 1**

**ADDITIONAL GRADING INFORMATION**

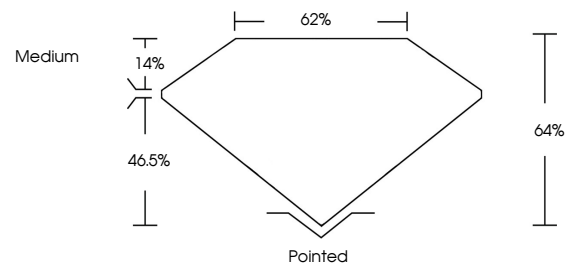
Polish **EXCELLENT**  
 Symmetry **EXCELLENT**  
 Fluorescence **NONE**

Inscription(s) **LABGROWN IGI LG539219534**

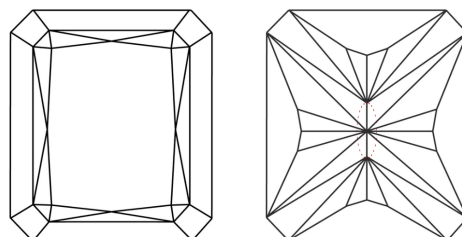
Comments: As Grown - No indication of post-growth treatment.  
 This Laboratory Grown Diamond was created by Chemical Vapor Deposition (CVD) growth process. Type IIa

LG539219534

**PROPORTIONS**



**CLARITY CHARACTERISTICS**

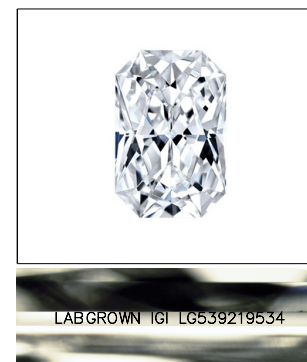


**KEY TO SYMBOLS**

Red symbols indicate internal characteristics.  
 Green symbols indicate external characteristics.

**GRADING SCALES**

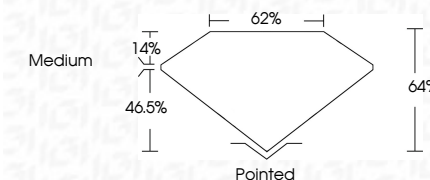
COLOR GRADING SCALE	CL	NC	FT	VLT	LT	
	COLORLESS D-F	NEAR COLORLESS G-J	FAINT K-M	VERY LIGHT N-R	LIGHT S-Z	
CLARITY (10x) GRADING SCALE	FL	IF	VVS	VS	SI	I
	FLAWLESS INTERNALLY FLAWLESS	VERY VERY SLIGHTLY INCLUDED	VERY SLIGHTLY INCLUDED	SLIGHTLY INCLUDED	INCLUDED	



**LASERSCRIBE<sup>SM</sup>**

Sample Image Used

August 16, 2022  
 IGI Report Number **LG539219534**  
 Description **LABORATORY GROWN  
DIAMOND**  
 Shape and Cutting Style **CUT CORNERED  
RECTANGULAR MODIFIED  
BRILLIANT**  
 Measurements **10.63 X 7.44 X 4.76 MM**  
**GRADING RESULTS**  
 Carat Weight **3.23 CARATS**  
 Color Grade **F**  
 Clarity Grade **VVS 1**



**ADDITIONAL GRADING INFORMATION**

Polish **EXCELLENT**  
 Symmetry **EXCELLENT**  
 Fluorescence **NONE**  
 Inscription(s) **LABGROWN IGI LG539219534**

Comments: As Grown - No indication of post-growth treatment.  
 This Laboratory Grown Diamond was created by Chemical Vapor Deposition (CVD) growth process. Type IIa



**IGI**



August 16, 2022  
 IGI Report No LG539219534  
**CUT CORNERED RECT. MODIFIED**  
**10.63 X 7.44 X 4.76 MM**  
 Carat Weight **3.23 CARATS**  
 Color Grade **F**  
 Clarity Grade **VVS 1**  
 Depth **64%**  
 Table **62%**  
 Girdle **Medium**  
 Culet **Pointed**  
 Polish **EXCELLENT**  
 Symmetry **EXCELLENT**  
 Fluorescence **NONE**  
 Inscription(s) **LABGROWN IGI LG539219534**  
 Comments:  
 As Grown - No indication of post-growth treatment.  
 This Laboratory Grown Diamond was created by Chemical Vapor Deposition (CVD) growth process. Type IIa