



ELECTRONIC COPY

LABORATORY GROWN DIAMOND REPORT

August 17, 2022
IGI Report Number LG539230941
Description LABORATORY GROWN DIAMOND
Shape and Cutting Style PRINCESS CUT
Measurements 7.59 X 7.52 X 5.18 MM

GRADING RESULTS

Carat Weight 2.68 CARATS
Color Grade F
Clarity Grade VVS 1

ADDITIONAL GRADING INFORMATION

Polish EXCELLENT
Symmetry EXCELLENT
Fluorescence NONE

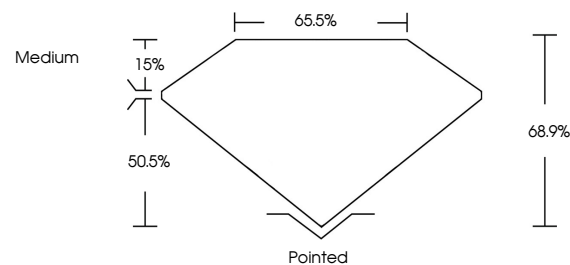
Inscription(s) LABGROWN IGI LG539230941

Comments: As Grown - No indication of post-growth treatment.

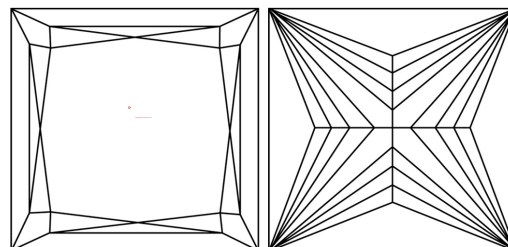
This Laboratory Grown Diamond was created by Chemical Vapor Deposition (CVD) growth process. Type IIa

LG539230941

PROPORTIONS



CLARITY CHARACTERISTICS

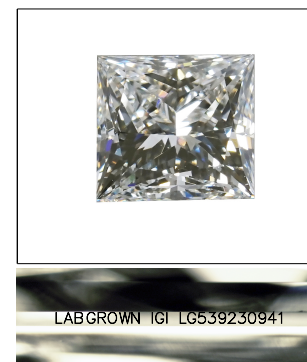


KEY TO SYMBOLS

Red symbols indicate internal characteristics.
Green symbols indicate external characteristics.

GRADING SCALES

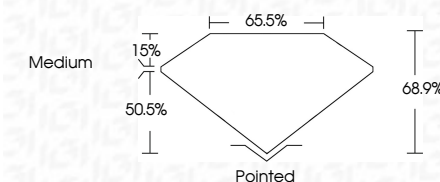
Table showing color grading scales (CL, NC, FT, VLT, LT) and clarity (10x) grading scales (FL, IF, VVS, VS, SI, I) with their corresponding descriptions.



LASERSCRIBE SM

Sample Image Used

August 17, 2022
IGI Report Number LG539230941
Description LABORATORY GROWN DIAMOND
Shape and Cutting Style PRINCESS CUT
Measurements 7.59 X 7.52 X 5.18 MM
GRADING RESULTS
Carat Weight 2.68 CARATS
Color Grade F
Clarity Grade VVS 1



ADDITIONAL GRADING INFORMATION

Polish EXCELLENT
Symmetry EXCELLENT
Fluorescence NONE
Inscription(s) LABGROWN IGI LG539230941

Comments: As Grown - No indication of post-growth treatment.
This Laboratory Grown Diamond was created by Chemical Vapor Deposition (CVD) growth process. Type IIa



Summary table of report details: August 17, 2022, IGI Report No LG539230941, PRINCESS CUT, 2.68 CARATS, VVS 1, 68.9% depth, 65.5% table, Medium grade, Pointed cut, EXCELLENT polish and symmetry, NONE fluorescence, LABGROWN IGI LG539230941 inscription.

As Grown - No indication of post-growth treatment.
This Laboratory Grown Diamond was created by Chemical Vapor Deposition (CVD) growth process. Type IIa