



ELECTRONIC COPY

LABORATORY GROWN DIAMOND REPORT

August 16, 2022	
IGI Report Number	LG541272913
Description	LABORATORY GROWN DIAMOND
Shape and Cutting Style	ROUND BRILLIANT
Measurements	7.20 - 7.24 X 4.45 MM

GRADING RESULTS

Carat Weight	1.42 CARAT
Color Grade	G
Clarity Grade	VVS 1
Cut Grade	IDEAL

ADDITIONAL GRADING INFORMATION

Polish	EXCELLENT
Symmetry	EXCELLENT
Fluorescence	NONE
Inscription(s)	LABGROWN LG541272913

Comments: HEARTS & ARROWS
As Grown - No indication of post-growth treatment.
This Laboratory Grown Diamond was created by
Chemical Vapor Deposition (CVD) growth process.
Type IIa

LG541272913

PROPORTIONS

Medium (Faceted)

15%

57%

34.9°

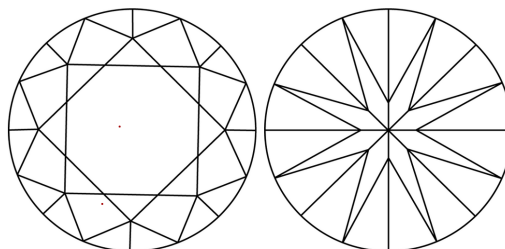
43%

40.8°

61.6%

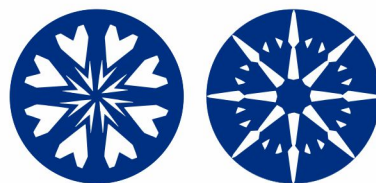
Pointed

CLARITY CHARACTERISTICS



KEY TO SYMBOLS

Red symbols indicate internal characteristics.
Green symbols indicate external characteristics.

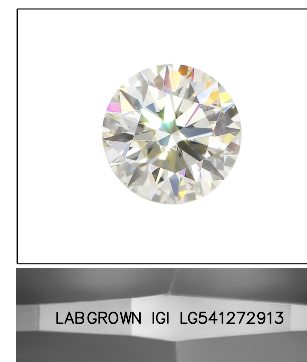


www.igi.org

LABORATORY GROWN
DIAMOND REPORT

GRADING SCALES

COLOR GRADING SCALE	CL		NC	FT	VL	LT
	COLORLESS D-F		NEAR COLORLESS G-J	FAINT K-M	VERY LIGHT N-R	LIGHT S-Z
CLARITY (10x) GRADING SCALE	FL	IF	VVS	VS	SI	I
	FLAWLESS INTERNALLY FLAWLESS		VERY VERY SLIGHTLY INCLUDED	VERY SLIGHTLY INCLUDED	SLIGHTLY INCLUDED	INCLUDED

LASERSCRIBESM

Sample Image Used

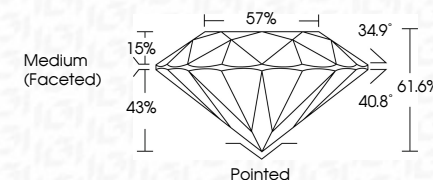


© IGI 2020, International Gemological Institute

FD - 10 20

LABORATORY GROWN DIAMOND REPORT

August 16, 2022	
IGI Report Number	LG541272913
Description	LABORATORY GROWN DIAMOND
Shape and Cutting Style	ROUND BRILLIANT
Measurements	7.20 - 7.24 X 4.45 MM
GRADING RESULTS	
Carat Weight	1.42 CARAT
Color Grade	G
Clarity Grade	VVS 1
Cut Grade	IDEAL



ADDITIONAL GRADING INFORMATION

Polish	EXCELLENT
Symmetry	EXCELLENT
Fluorescence	NONE
Inscription(s)	LABGROWN IGI LG541272913

Comments: HEARTS & ARROWS
As Grown - No indication of post-growth treatment.
This Laboratory Grown Diamond was created by
Chemical Vapor Deposition (CVD) growth process.
Type IIa



August 16, 2022	Color Grade	1.42 CARAT	<p>Comments:</p> <p>HEARX & AROMS As Grown - No indication of post-growth treatment.</p> <p>The only Grown Diamond was the second in Chemical Vapor Deposition (CVD) growth process.</p> <p>Type Ia</p>
G Report No. LG541272913	Carat Weight	1.42 CARAT	
ROUND BRILLIANT	Color Grade	G	
20 - 20 - 7.24 X 4.45 MM	Clarity Grade	VVS 1	
	Cut Grade	IDEAL	
	Depth	61.6%	
	Table	57%	
	Girdle	Medium (Faceted)	
	Culet	Pointed	
	Polish	EXCELLENT	
	Symmetry	EXCELLENT	
	Fluorescence	NONE	
	Inscriptions	LABGROWN LG1 LG541272913	