



ELECTRONIC COPY

LABORATORY GROWN DIAMOND REPORT

August 16, 2022
IGI Report Number LG541272994
Description LABORATORY GROWN DIAMOND
Shape and Cutting Style CUT CORNERED RECTANGULAR MODIFIED BRILLIANT
Measurements 8.87 X 6.30 X 4.02 MM

GRADING RESULTS

Carat Weight 1.96 CARAT
Color Grade E
Clarity Grade VVS 1

ADDITIONAL GRADING INFORMATION

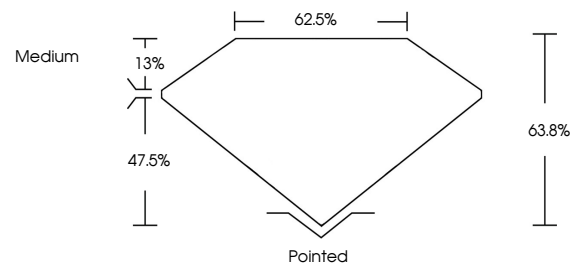
Polish EXCELLENT
Symmetry EXCELLENT
Fluorescence NONE

Inscription(s) LABGROWN IGI LG541272994

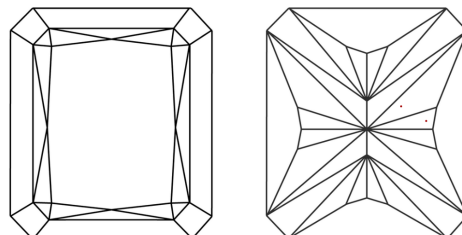
Comments: As Grown - No indication of post-growth treatment. This Laboratory Grown Diamond was created by Chemical Vapor Deposition (CVD) growth process. Type IIa

LG541272994

PROPORTIONS



CLARITY CHARACTERISTICS

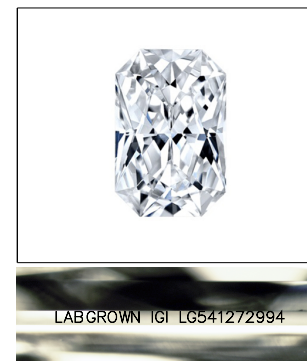


KEY TO SYMBOLS

Red symbols indicate internal characteristics. Green symbols indicate external characteristics.

GRADING SCALES

Table with 2 rows and 5 columns showing color grading scales (CL, NC, FT, VLT, LT) and clarity (10x) grading scales (FL, IF, VVS, VS, SI, I).

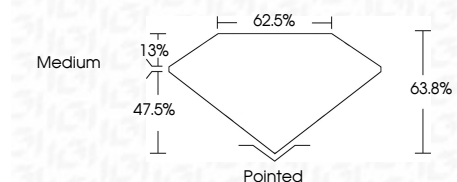


LASERSCRIBE SM Sample Image Used

August 16, 2022
IGI Report Number LG541272994
Description LABORATORY GROWN DIAMOND
Shape and Cutting Style CUT CORNERED RECTANGULAR MODIFIED BRILLIANT
Measurements 8.87 X 6.30 X 4.02 MM

GRADING RESULTS

Carat Weight 1.96 CARAT
Color Grade E
Clarity Grade VVS 1



ADDITIONAL GRADING INFORMATION

Polish EXCELLENT
Symmetry EXCELLENT
Fluorescence NONE

Inscription(s) LABGROWN IGI LG541272994

Comments: As Grown - No indication of post-growth treatment. This Laboratory Grown Diamond was created by Chemical Vapor Deposition (CVD) growth process. Type IIa



Summary table of report details including date, report number, description, measurements, grading results, and additional information.

As Grown - No indication of post-growth treatment. This Laboratory Grown Diamond was created by Chemical Vapor Deposition (CVD) growth process. Type IIa