



**ELECTRONIC COPY**

## LABORATORY GROWN DIAMOND REPORT

August 17, 2022	
IGI Report Number	LG541278111
Description	LABORATORY GROWN DIAMOND
Shape and Cutting Style	OVAL BRILLIANT
Measurements	11.30 X 8.07 X 4.79 MM

## GRADING RESULTS

Carat Weight	2.66 CARATS
Color Grade	F
Clarity Grade	VVS 2

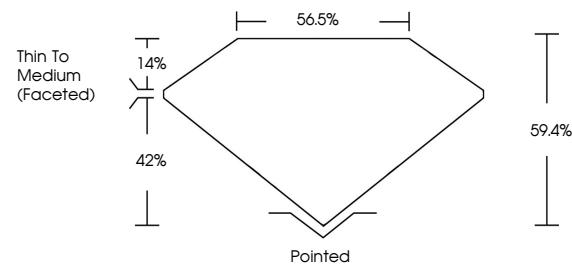
### ADDITIONAL GRADING INFORMATION

Polish	EXCELLENT
Symmetry	EXCELLENT
Fluorescence	NONE

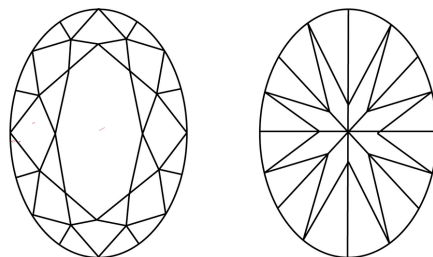
Inscription(s) **LABGROWN IGI LG541278111**  
 Comments: As Grown - No indication of post-growth treatment.  
 This Laboratory Grown Diamond was created by Chemical Vapor Deposition (CVD) growth process.  
 Type IIa

LG541278111

## PROPORTIONS



## CLARITY CHARACTERISTICS



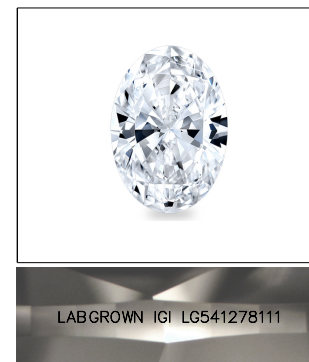
## KEY TO SYMBOLS

Red symbols indicate internal characteristics.  
Green symbols indicate external characteristics.

LABORATORY GROWN  
DIAMOND REPORT

## GRADING SCALES

COLOR GRADING SCALE	CL		NC		FT		VLT		LT	
	COLORLESS D-F		NEAR COLORLESS G-J		FAINT K-M		VERY LIGHT N-R		LIGHT S-Z	
CLARITY (10x) GRADING SCALE	FL	IF	VVS		VS		SI		I	
	FLAWLESS INTERNALLY FLAWLESS		VERY VERY SLIGHTLY INCLUDED		VERY SLIGHTLY INCLUDED		SLIGHTLY INCLUDED		INCLUDED	

LASERSCRIBE<sup>SM</sup>

Sample Image Used



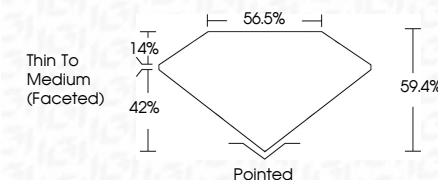
© IGI 2020, International Gemological Institute

FD - 10 20

**www.igi.org**

## LABORATORY GROWN DIAMOND REPORT

August 17, 2022	
IGI Report Number	LG541278111
Description	LABORATORY GROWN DIAMOND
Shape and Cutting Style	OVAL BRILLIANT
Measurements	11.30 X 8.07 X 4.79 MM
<b>GRADING RESULTS</b>	
Carat Weight	2.66 CARATS
Color Grade	F
Clarity Grade	VVS 2



### ADDITIONAL GRADING INFORMATION

Polish	EXCELLENT
Symmetry	EXCELLENT
Fluorescence	NONE
Inscription(s)	LABGROWN IGI LG541278111

Inscription(s) LABGROWN IGI LG541278111

Comments: As Grown - No indication of post-growth treatment.  
This Laboratory Grown Diamond was created by Chemical Vapor Deposition (CVD) growth process.  
Type IIa



<b>August 17, 2022</b>	<b>GJ Report No LG64I278111</b>	<b>2.66 CARATS</b>
<b>COVAL BRILLANT</b>		<b>F</b>
<b>1.30 X 8.07 X 4.79 MM</b>		<b>VVS 2</b>
		<b>59.4%</b>
		<b>56.9%</b>
		<b>Thin To Medium (occased)</b>
		<b>Poished</b>
		<b>EXCELLENT</b>
		<b>EXCELLENT</b>
		<b>NONE</b>
		<b>LARGROWN IGI</b>
		<b>LG64I278111</b>
		<b>Comments:</b>
		<b>As Grown - No indication of post-growth treatment.</b>
		<b>The Laboratory Grown Diamond was determined to be chemically identical to natural diamond by Laser Raman Spectroscopy (LRS) and Chemical Vapor Deposition (CVD) Growth Process.</b>
		<b>Type IIG</b>

As Grown - No Indication of post-growth treatment.  
This Laboratory Grown Diamond was created by Chemical Vapor Deposition (CVD) growth process.  
Type IIa