



**ELECTRONIC COPY**

## LABORATORY GROWN DIAMOND REPORT

September 8, 2022	
IGI Report Number	LG542228734
Description	LABORATORY GROWN DIAMOND
Shape and Cutting Style	ROUND BRILLIANT
Measurements	8.09 - 8.11 X 4.90 MM

## GRADING RESULTS

Carat Weight	1.95 CARAT
Color Grade	G
Clarity Grade	VVS 1
Cut Grade	IDEAL

### ADDITIONAL GRADING INFORMATION

Polish	EXCELLENT
Symmetry	EXCELLENT
Fluorescence	NONE
Inscription(s)	LABGROWN   G   LG542228734

Comments: HEARTS & ARROWS  
As Grown - No indication of post-growth treatment.  
This Laboratory Grown Diamond was created by  
Chemical Vapor Deposition (CVD) growth process.  
Type IIa

LG542228734

**PROPORTIONS**

Thin To Medium (Faceted)

58%

14%

43%

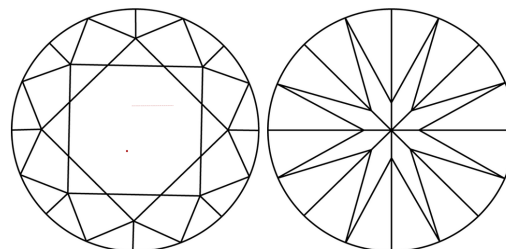
33.6°

40.8°

60.5%

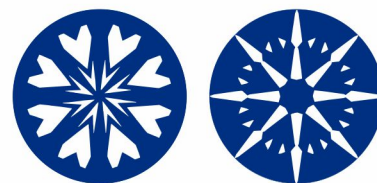
Pointed

## CLARITY CHARACTERISTICS



## KEY TO SYMBOLS

Red symbols indicate internal characteristics.  
Green symbols indicate external characteristics.

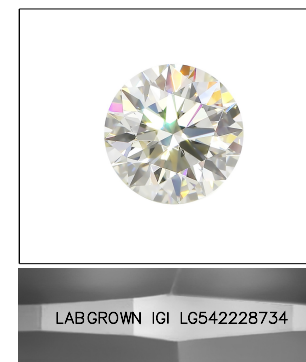


**www.igi.org**

LABORATORY GROWN  
DIAMOND REPORT

## GRADING SCALES

COLOR GRADING SCALE	CL		NC		FT		VLT		LT	
	COLORLESS D-F		NEAR COLORLESS G-J		FAINT K-M		VERY LIGHT N-R		LIGHT S-Z	
CLARITY (10x) GRADING SCALE	FL	IF	VVS		VS		SI		I	
	FLAWLESS INTERNALLY FLAWLESS		VERY VERY SLIGHTLY INCLUDED		VERY SLIGHTLY INCLUDED		SLIGHTLY INCLUDED		INCLUDED	

LASERSCRIBE<sup>SM</sup>

Sample Image Used

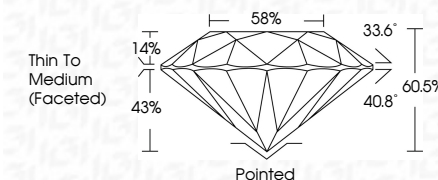


© IGI 2020, International Gemological Institute

FD - 10 20

LABORATORY GROWN DIAMOND REPORT

September 8, 2022	
IGI Report Number	LG542228734
Description	LABORATORY GROWN DIAMOND
Shape and Cutting Style	ROUND BRILLIANT
Measurements	8.09 - 8.11 X 4.90 MM
<b>GRADING RESULTS</b>	
Carat Weight	1.95 CARAT
Color Grade	G
Clarity Grade	VVS 1
Cut Grade	IDEAL



### ADDITIONAL GRADING INFORMATION

Polish	EXCELLENT
Symmetry	EXCELLENT
Fluorescence	NONE
Inscription(s)	LABGROWN IGI LG542228734

Comments: HEARTS & ARROWS  
As Grown - No indication of post-growth treatment.  
This Laboratory Grown Diamond was created by  
Chemical Vapor Deposition (CVD) growth process.  
Type IIa



September 8, 2022  
GJ Report No | G54222873A

ROUND BRILLIANT	1.95 CARAT
9.09 - 9.11 X 9.00 MM	G
Carat Weight	
Color Grade	VVS 1
Clarity Grade	IDEAL
Cut Grade	60.5%
Depth	58%
Table	Thin To Medium (Faceted)
Girdle	
Culet	Pointed
Polish	EXCELLENT
Symmetry	EXCELLENT
Fluorescence	NONE
Inspection(s)	LAGROWGN IGI LG54227374
Comments:	
HEARTS & ARBONS	
As Grown - No indication of post-growth treatment.	
The Laboratory Grown Diamond was created by Chemical Vapor Deposition (CVD) growth process.	
Very High	