



ELECTRONIC COPY

LABORATORY GROWN DIAMOND REPORT

October 6, 2022
 IGI Report Number **LG547255527**
 Description **LABORATORY GROWN
DIAMOND**
 Shape and Cutting Style **CUT CORNERED RECTANGULAR
MODIFIED BRILLIANT**
 Measurements **7.89 X 5.64 X 3.60 MM**

GRADING RESULTS

Carat Weight **1.36 CARAT**
 Color Grade **E**
 Clarity Grade **VVS 2**

ADDITIONAL GRADING INFORMATION

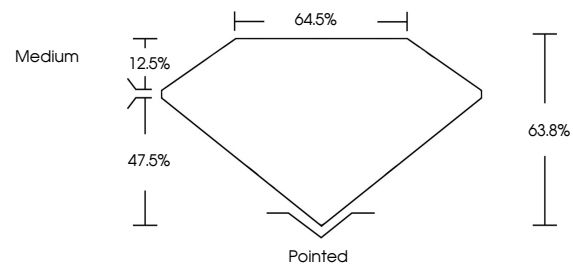
Polish **EXCELLENT**
 Symmetry **EXCELLENT**
 Fluorescence **NONE**

Inscription(s) **LABGROWN (IGI) LG547255527**

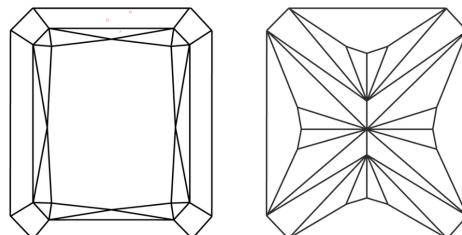
Comments: As Grown - No indication of post-growth treatment.
 This Laboratory Grown Diamond was created by Chemical Vapor Deposition (CVD) growth process. Type IIa

LG547255527

PROPORTIONS



CLARITY CHARACTERISTICS



KEY TO SYMBOLS

Red symbols indicate internal characteristics.
 Green symbols indicate external characteristics.

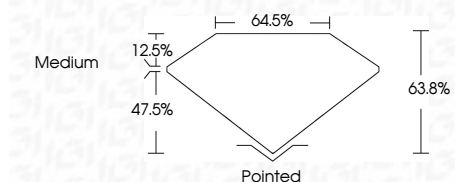
GRADING SCALES

| | | | | | | |
|-----------------------------|------------------------------|-----------------------------|------------------------|-------------------|-----------|---|
| COLOR GRADING SCALE | CL | NC | FT | VLT | LT | |
| | COLORLESS D-F | NEAR COLORLESS G-J | FAINT K-M | VERY LIGHT N-R | LIGHT S-Z | |
| CLARITY (10x) GRADING SCALE | FL | IF | VVS | VS | SI | I |
| | FLAWLESS INTERNALLY FLAWLESS | VERY VERY SLIGHTLY INCLUDED | VERY SLIGHTLY INCLUDED | SLIGHTLY INCLUDED | INCLUDED | |

October 6, 2022
 IGI Report Number **LG547255527**
 Description **LABORATORY GROWN
DIAMOND**
 Shape and Cutting Style **CUT CORNERED
RECTANGULAR MODIFIED
BRILLIANT**
 Measurements **7.89 X 5.64 X 3.60 MM**

GRADING RESULTS

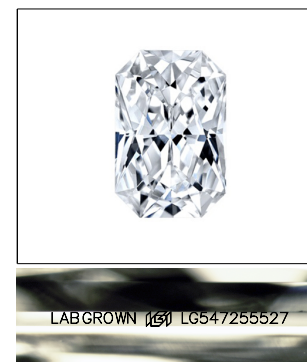
Carat Weight **1.36 CARAT**
 Color Grade **E**
 Clarity Grade **VVS 2**



ADDITIONAL GRADING INFORMATION

Polish **EXCELLENT**
 Symmetry **EXCELLENT**
 Fluorescence **NONE**
 Inscription(s) **LABGROWN (IGI) LG547255527**

Comments: As Grown - No indication of post-growth treatment.
 This Laboratory Grown Diamond was created by Chemical Vapor Deposition (CVD) growth process. Type IIa



LASERSCRIBESM

Sample Image Used



IGI

| | | | | | | | | | | |
|-----------------------------|---------------------------|---------------|-------|---------|-----------|-----------|-----------|----------------------------|--------------|--|
| October 6, 2022 | IGI Report No LG547255527 | 1.36 CARAT | E | Pointed | EXCELLENT | EXCELLENT | NONE | LABGROWN (IGI) LG547255527 | Comments: | As Grown - No indication of post-growth treatment. The Laboratory Grown Diamond was created by Chemical Vapor Deposition (CVD) growth process. Type IIa |
| CUT CORNERED RECT. MODIFIED | 7.89 X 5.64 X 3.60 MM | VVS 2 | 63.8% | 64.5% | Medium | EXCELLENT | EXCELLENT | LABGROWN (IGI) LG547255527 | | |
| Carat Weight | Color Grade | Clarity Grade | Depth | Table | Girdle | Culet | Polish | Symmetry | Fluorescence | Inscription(s) |