



ELECTRONIC COPY

LABORATORY GROWN DIAMOND REPORT

October 5, 2022	
IGI Report Number	LG549205450
Description	LABORATORY GROWN DIAMOND
Shape and Cutting Style	CUT CORNERED RECTANGULAR MODIFIED BRILLIANT
Measurements	7.92 X 5.66 X 3.62 MM

GRADING RESULTS

Carat Weight	1.41 CARAT
Color Grade	E
Clarity Grade	VVS 1

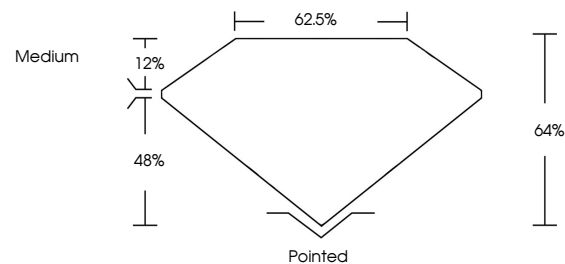
ADDITIONAL GRADING INFORMATION

Polish	EXCELLENT
Symmetry	EXCELLENT
Fluorescence	NONE

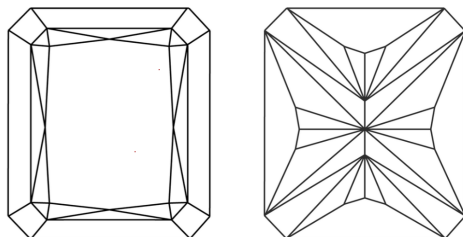
Inscription(s) **LABGROWN 1(3) LG549205450**
 Comments: As Grown - No indication of post-growth treatment.
 This Laboratory Grown Diamond was created by Chemical Vapor Deposition (CVD) growth process.
 Type IIa

LG549205450

PROPORTIONS



CLARITY CHARACTERISTICS

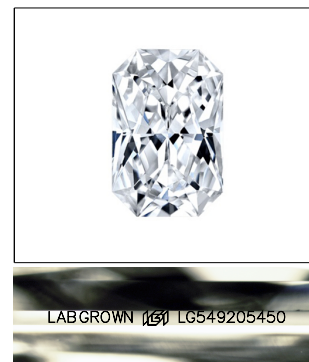


KEY TO SYMBOLS

Red symbols indicate internal characteristics.
Green symbols indicate external characteristics.

GRADING SCALES

COLOR GRADING SCALE	CL		NC		FT		VLT		LT	
	COLORLESS D-F		NEAR COLORLESS G-J		FAINT K-M		VERY LIGHT N-R		LIGHT S-Z	
CLARITY (10x) GRADING SCALE	FL	IF	VVS		VS		SI		I	
	FLAWLESS Internally Flawless		VERY VERY Slightly Included		VERY Slightly Included		SLIGHTLY Included		Included	

**LASERSCRIBESM**

Sample Image Used



© IGI 2020, International Gemological Institute

FD - 10 20

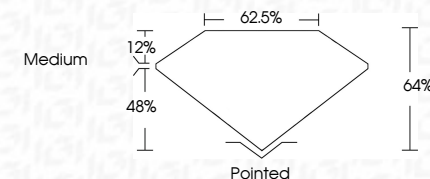
www.igi.org

LABORATORY GROWN DIAMOND REPORT

October 5, 2022	
IGI Report Number	LG549205450
Description	LABORATORY GROWN DIAMOND
Shape and Cutting Style	CUT CORNERED RECTANGULAR MODIFIED BRILLIANT
Measurements	7.92 X 5.66 X 3.62 MM

GRADING RESULTS

Carat Weight	1.41 CARAT
Color Grade	E
Clarity Grade	VVS 1



ADDITIONAL GRADING INFORMATION

Polish	EXCELLENT
Symmetry	EXCELLENT
Fluorescence	NONE
Inscription(s)	LABGROWN (16) LG549205450

Inscription(s) LABGROWN (13) LG549205450

Comments: As Grown - No indication of post-growth treatment.
This Laboratory Grown Diamond was created by Chemical Vapor Deposition (CVD) growth process.
Type IIa

[illegible]

As Grown - No Indication of post-growth treatment.
This Laboratory Grown Diamond was created by Chemical Vapor Deposition (CVD) growth process.