



ELECTRONIC COPY

LABORATORY GROWN DIAMOND REPORT

October 5, 2022
IGI Report Number LG549205458
Description LABORATORY GROWN DIAMOND
Shape and Cutting Style CUT CORNERED RECTANGULAR MODIFIED BRILLIANT
Measurements 7.90 X 5.65 X 3.59 MM

GRADING RESULTS

Carat Weight 1.36 CARAT
Color Grade E
Clarity Grade VVS 2

ADDITIONAL GRADING INFORMATION

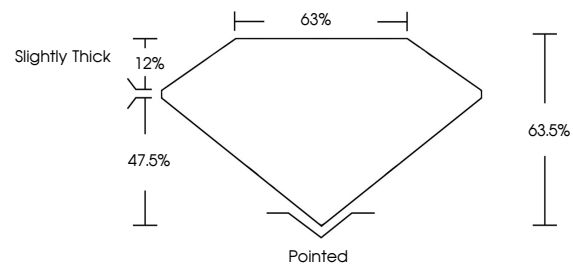
Polish EXCELLENT
Symmetry EXCELLENT
Fluorescence NONE

Inscription(s) LABGROWN (IGI) LG549205458

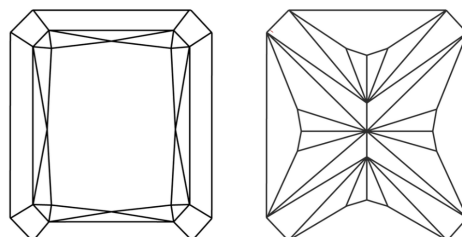
Comments: As Grown - No indication of post-growth treatment. This Laboratory Grown Diamond was created by Chemical Vapor Deposition (CVD) growth process. Type IIa

LG549205458

PROPORTIONS



CLARITY CHARACTERISTICS

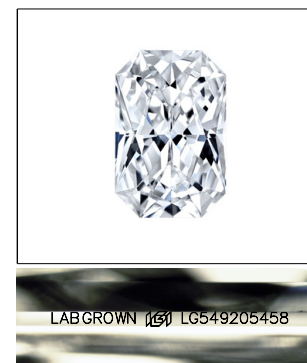


KEY TO SYMBOLS

Red symbols indicate internal characteristics. Green symbols indicate external characteristics.

GRADING SCALES

Table with 2 rows and 5 columns showing color grading scales (CL, NC, FT, VLT, LT) and clarity (10x) grading scales (FL, IF, VVS, VS, SI, I).



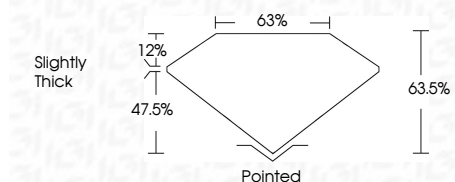
LASERSCRIBE SM

Sample Image Used

October 5, 2022
IGI Report Number LG549205458
Description LABORATORY GROWN DIAMOND
Shape and Cutting Style CUT CORNERED RECTANGULAR MODIFIED BRILLIANT
Measurements 7.90 X 5.65 X 3.59 MM

GRADING RESULTS

Carat Weight 1.36 CARAT
Color Grade E
Clarity Grade VVS 2



ADDITIONAL GRADING INFORMATION

Polish EXCELLENT
Symmetry EXCELLENT
Fluorescence NONE
Inscription(s) LABGROWN (IGI) LG549205458

Comments: As Grown - No indication of post-growth treatment. This Laboratory Grown Diamond was created by Chemical Vapor Deposition (CVD) growth process. Type IIa



IGI



October 5, 2022
IGI Report No LG549205458
CUT CORNERED RECT. MODIFIED
7.90 X 5.65 X 3.59 MM
Carat Weight 1.36 CARAT
Color Grade E
Clarity Grade VVS 2
Depth 63.5%
Table 63%
Girdle Slightly Thick
Culet Pointed
Polish EXCELLENT
Symmetry EXCELLENT
Fluorescence NONE
Inscription(s) LABGROWN (IGI) LG549205458
Comments: As Grown - No indication of post-growth treatment. This Laboratory Grown Diamond was created by Chemical Vapor Deposition (CVD) growth process. Type IIa