



ELECTRONIC COPY

LABORATORY GROWN DIAMOND REPORT

LG549218588

Report verification at igi.org

LABORATORY GROWN
DIAMOND REPORT

LABORATORY GROWN DIAMOND REPORT

LABORATORY GROWN DIAMOND REPORT

October 26, 2022
IGI Report Number **LG549218588**
Description **LABORATORY GROWN
DIAMOND**
Shape and Cutting Style **ROUND BRILLIANT**
Measurements **8.05 - 8.08 X 4.88 MM**

GRADING RESULTS

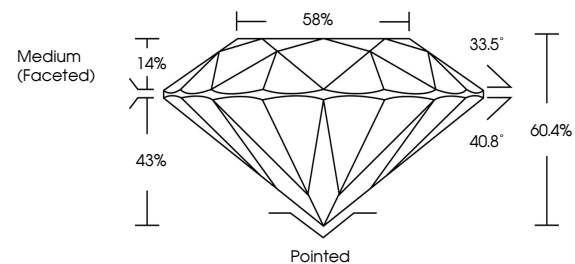
Carat Weight **1.94 CARAT**
Color Grade **H**
Clarity Grade **VVS 1**
Cut Grade **IDEAL**

ADDITIONAL GRADING INFORMATION

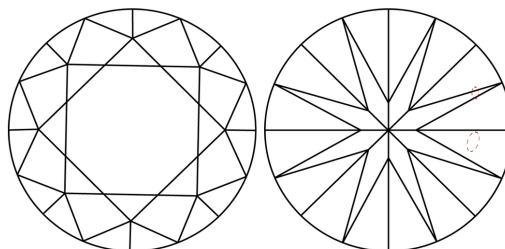
Polish **EXCELLENT**
Symmetry **EXCELLENT**
Fluorescence **NONE**
Inscription(s) **LABGROWN (IGI) LG549218588**

Comments: HEARTS & ARROWS
As Grown - No indication of post-growth treatment.
This Laboratory Grown Diamond was created by
Chemical Vapor Deposition (CVD) process.

PROPORTIONS



CLARITY CHARACTERISTICS



KEY TO SYMBOLS

Red symbols indicate internal characteristics.
Green symbols indicate external characteristics.



www.igi.org

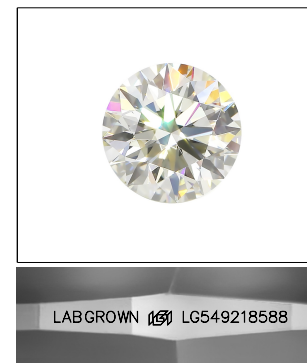
GRADING SCALES

CLARITY

IF	VVS 1-2	VS 1-2	SI 1-2	I 1-3
Internally Flawless	Very Very Slightly Included	Very Slightly Included	Slightly Included	Included

COLOR

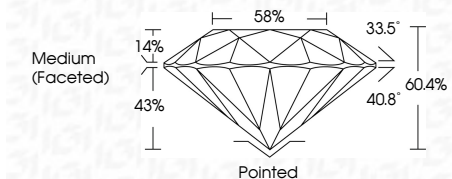
D	E	F	G	H	I	J	Faint	Very Light	Light
---	---	---	---	---	---	---	-------	------------	-------



LASERSCRIBESM

Sample Image Used

October 26, 2022
IGI Report Number **LG549218588**
Description **LABORATORY GROWN
DIAMOND**
Shape and Cutting Style **ROUND BRILLIANT**
Measurements **8.05 - 8.08 X 4.88 MM**
GRADING RESULTS
Carat Weight **1.94 CARAT**
Color Grade **H**
Clarity Grade **VVS 1**
Cut Grade **IDEAL**



ADDITIONAL GRADING INFORMATION

Polish **EXCELLENT**
Symmetry **EXCELLENT**
Fluorescence **NONE**
Inscription(s) **LABGROWN (IGI) LG549218588**

Comments: HEARTS & ARROWS
As Grown - No indication of post-growth treatment.
This Laboratory Grown Diamond was created by
Chemical Vapor Deposition (CVD) process.



IGI

October 26, 2022
IGI Report No LG549218588
ROUND BRILLIANT
8.05 - 8.08 X 4.88 MM

Carat Weight	1.94 CARAT
Color Grade	H
Clarity Grade	VVS 1
Cut Grade	IDEAL
Depth	60.4%
Table	58%
Grade	Medium (Faceted)
Culet	Pointed
Polish	EXCELLENT
Symmetry	EXCELLENT
Fluorescence	NONE
Inscription(s)	LABGROWN (IGI) LG549218588

Comments: HEARTS & ARROWS
As Grown - No indication of post-growth treatment.
This Laboratory Grown Diamond was created by Chemical Vapor Deposition (CVD) process.

