



ELECTRONIC COPY

LABORATORY GROWN DIAMOND REPORT

LG549218688

Report verification at igi.org

LABORATORY GROWN
DIAMOND REPORT

LABORATORY GROWN DIAMOND REPORT

LABORATORY GROWN DIAMOND REPORT

November 9, 2022
IGI Report Number **LG549218688**
Description **LABORATORY GROWN
DIAMOND**
Shape and Cutting Style **ROUND BRILLIANT**
Measurements **7.34 - 7.39 X 4.45 MM**

GRADING RESULTS

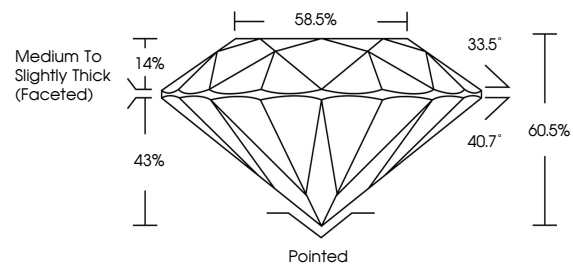
Carat Weight **1.48 CARAT**
Color Grade **G**
Clarity Grade **VVS 2**
Cut Grade **IDEAL**

ADDITIONAL GRADING INFORMATION

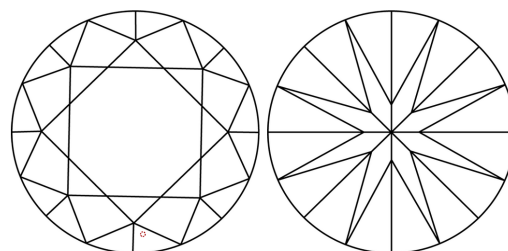
Polish **EXCELLENT**
Symmetry **EXCELLENT**
Fluorescence **NONE**
Inscription(s) **LABGROWN (L) LG549218688**

Comments: HEARTS & ARROWS
As Grown - No indication of post-growth treatment.
This Laboratory Grown Diamond was created by
Chemical Vapor Deposition (CVD) process.

PROPORTIONS

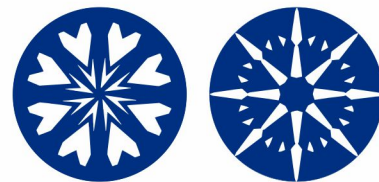


CLARITY CHARACTERISTICS



KEY TO SYMBOLS

Red symbols indicate internal characteristics.
Green symbols indicate external characteristics.



www.igi.org

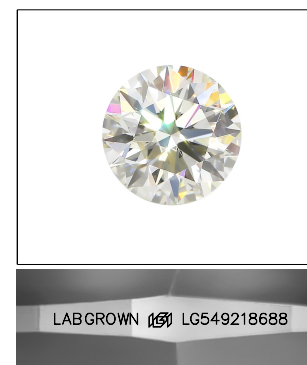
GRADING SCALES

CLARITY

IF	VVS ¹⁻²	VS ¹⁻²	SI ¹⁻²	I ¹⁻³
Internally Flawless	Very Very Slightly Included	Very Slightly Included	Slightly Included	Included

COLOR

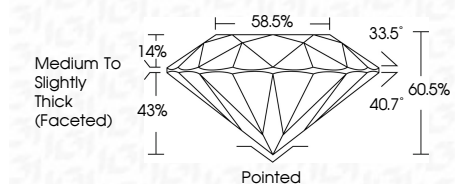
D	E	F	G	H	I	J	Faint	Very Light	Light
---	---	---	---	---	---	---	-------	------------	-------



LASERSCRIBESM

Sample Image Used

November 9, 2022
IGI Report Number **LG549218688**
Description **LABORATORY GROWN
DIAMOND**
Shape and Cutting Style **ROUND BRILLIANT**
Measurements **7.34 - 7.39 X 4.45 MM**
GRADING RESULTS
Carat Weight **1.48 CARAT**
Color Grade **G**
Clarity Grade **VVS 2**
Cut Grade **IDEAL**



ADDITIONAL GRADING INFORMATION

Polish **EXCELLENT**
Symmetry **EXCELLENT**
Fluorescence **NONE**
Inscription(s) **LABGROWN (L) LG549218688**

Comments: HEARTS & ARROWS
As Grown - No indication of post-growth treatment.
This Laboratory Grown Diamond was created by
Chemical Vapor Deposition (CVD) process.



IGI

November 9, 2022	1.48 CARAT	G
IGI Report No LG549218688	VVS 2	IDEAL
ROUND BRILLIANT	IDEAL	60.5%
7.34 - 7.39 X 4.45 MM	Depth	58.5%
Carat Weight	Table	Medium To Slightly Thick (Faceted)
Color Grade	Grade	Pointed
Clarity Grade	Cut Grade	EXCELLENT
Cut Grade	Polish	EXCELLENT
Depth	Symmetry	EXCELLENT
Table	Fluorescence	NONE
Grade	Inscription(s)	LABGROWN (L) LG549218688
Culet	Comments:	HEARTS & ARROWS
Polish	As Grown - No indication of post-growth treatment.	This Laboratory Grown Diamond was created by Chemical Vapor Deposition (CVD) process.
Symmetry		
Fluorescence		
Inscription(s)		