



**ELECTRONIC COPY**

## LABORATORY GROWN DIAMOND REPORT

November 22, 2022	
IGI Report Number	LG553246475
Description	LABORATORY GROWN DIAMOND
Shape and Cutting Style	ROUND BRILLIANT
Measurements	7.97 - 8.01 X 4.87 MM

## GRADING RESULTS

Carat Weight	1.91 CARAT
Color Grade	G
Clarity Grade	VVS 2
Cut Grade	IDEAL

### ADDITIONAL GRADING INFORMATION

Polish	EXCELLENT
Symmetry	EXCELLENT
Fluorescence	NONE
Inscription(s)	LABGROWN 151 LG553246475

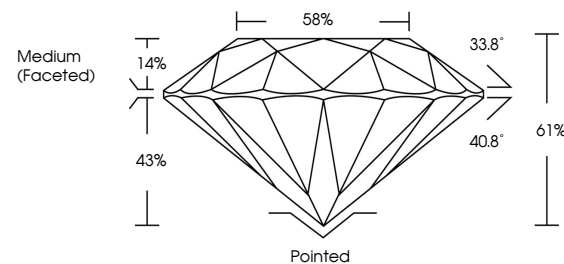
Inscription(s) **LABGROWN 16 LG553246475**  
 Comments: HEARTS & ARROWS  
 As Grown - No indication of post-growth treatment.  
 This Laboratory Grown Diamond was created by  
 Chemical Vapor Deposition (CVD) process.

## LABORATORY GROWN DIAMOND REPORT

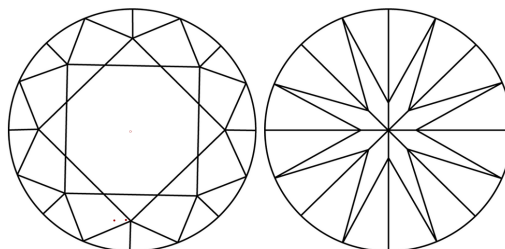
LG553246475

Report verification at [igi.org](http://igi.org)

## PROPORTIONS



## CLARITY CHARACTERISTICS



## KEY TO SYMBOLS

Red symbols indicate internal characteristics.  
Green symbols indicate external characteristics.



**www.igi.org**

LABORATORY GROWN  
DIAMOND REPORT

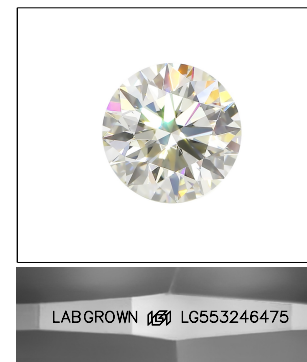
## GRADING SCALES

## CLARITY

IF	VVS <sup>1-2</sup>	VS <sup>1-2</sup>	SI <sup>1-2</sup>	I <sup>1-3</sup>
Internally Flawless	Very Very Slightly Included	Very Slightly Included	Slightly Included	Included

**COLOR**

D E F G H I J Faint Very Light Light

LASERSCRIBE<sup>SM</sup>

Sample Image Used



© IGI 2020, International Gemological Institute

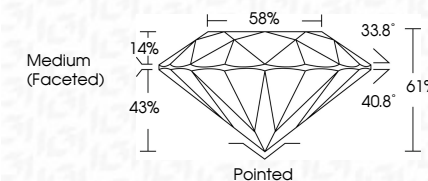
FD - 10 20

THIS DOCUMENT WAS PRODUCED WITH THE FOLLOWING SECURITY MEASURES: SPECIAL DOCUMENT PAPER, INK SCREENS, WATERMARK, BACKGROUND DESIGNS, HOLOGRAM AND OTHER SECURITY FEATURES NOT LISTED AND DO EXCEED DOCUMENT SECURITY INDUSTRY GUIDELINE

## LABORATORY GROWN DIAMOND REPORT

November 22, 2022	
IGI Report Number	LG553246475
Description	LABORATORY GROWN DIAMOND
Shape and Cutting Style	ROUND BRILLIANT
Measurements	7.97 - 8.01 X 4.87 MM

GRADING RESULTS	
Carat Weight	1.91 CARAT
Color Grade	G
Clarity Grade	VVS 2
Cut Grade	IDEAL



### ADDITIONAL GRADING INFORMATION

Polish	EXCELLENT
Symmetry	EXCELLENT
Fluorescence	NONE
Inscription(s)	LABGROWN (157) LG553246475

Comments: HEARTS & ARROWS  
As Grown - No indication of post-growth treatment.  
This Laboratory Grown Diamond was created by  
Chemical Vapor Deposition (CVD) process.



November 22, 2022  
 IGI Report No LG553246475  
 ROUND BRILLIANT

1.91 CARAT	1.97 - 8.01 X 4.87 MM
G	
VVS2	
IDEAL	
61%	
58%	
Medium (Encrusted)	

	Pointed EXCELLENT EXCELLENT NONE LAGROWN (55)
Culet	
Polish	
Symmetry	
Fluorescence	
Inscription(s)	

**Comments:**  
**HEARTS & AROMAS**  
Grown - No indication of post-growth treatment  
is Laboratory Grown Diamond was created by Chemical Vapor Deposition

Comments:  
HEARTS & ARROWS  
is Grown - No Indica  
treatment.  
is Laboratory Grown  
created by Chemica  
1/10) process