



**ELECTRONIC COPY**

## LABORATORY GROWN DIAMOND REPORT

December 9, 2022	
IGI Report Number	LG555270593
Description	LABORATORY GROWN DIAMOND
Shape and Cutting Style	ROUND BRILLIANT
Measurements	7.25 - 7.29 X 4.46 MM

## GRADING RESULTS

Carat Weight	1.46 CARAT
Color Grade	G
Clarity Grade	VVS 2
Cut Grade	IDEAL

### ADDITIONAL GRADING INFORMATION

Polish	EXCELLENT
Symmetry	EXCELLENT
Fluorescence	NONE
Inscription(s)	LABGROWN 151 LG555270593

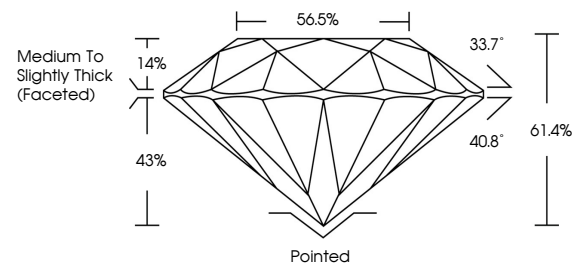
Inscription(s) **LABGROWN 16 LG555270593**  
 Comments: HEARTS & ARROWS  
 As Grown - No indication of post-growth treatment.  
 This Laboratory Grown Diamond was created by  
 Chemical Vapor Deposition (CVD) growth process.

## LABORATORY GROWN DIAMOND REPORT

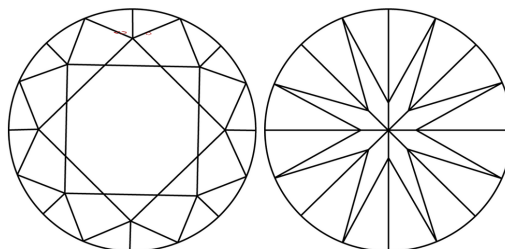
LG555270593

Report verification at [igi.org](http://igi.org)

## PROPORTIONS



## CLARITY CHARACTERISTICS



## KEY TO SYMBOLS

Red symbols indicate internal characteristics.  
Green symbols indicate external characteristics.



**www.igi.org**

LABORATORY GROWN  
DIAMOND REPORT

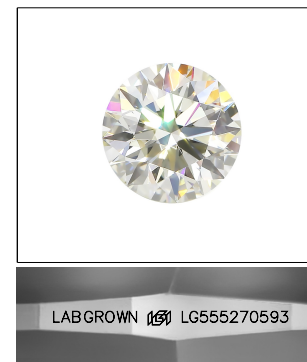
## GRADING SCALES

## CLARITY

IF	VVS <sup>1-2</sup>	VS <sup>1-2</sup>	SI <sup>1-2</sup>	I <sup>1-3</sup>
Internally Flawless	Very Very Slightly Included	Very Slightly Included	Slightly Included	Included

**COLOR**

D E F G H I J Faint Very Light Light

LASERSCRIBE<sup>SM</sup>

Sample Image Used



© IGI 2020, International Gemological Institute

FD - 10 20

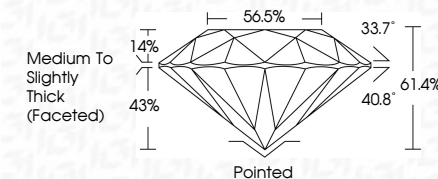
THIS DOCUMENT WAS PRODUCED WITH THE FOLLOWING SECURITY MEASURES: SPECIAL DOCUMENT PAPER, INK SCREENS, WATERMARK, BACKGROUND DESIGNS, HOLOGRAM AND OTHER SECURITY FEATURES NOT LISTED AND DO EXCEED DOCUMENT SECURITY INDUSTRY GUIDELINE

LABORATORY GROWN DIAMOND REPORT

December 9, 2022	
IGI Report Number	LG555270593
Description	LABORATORY GROWN DIAMOND
Shape and Cutting Style	ROUND BRILLIANT
Measurements	7.25 - 7.29 X 4.46 MM

## GRADING RESULTS

Carat Weight	1.46 CARAT
Color Grade	G
Clarity Grade	VVS 2
Cut Grade	IDEAL



### ADDITIONAL GRADING INFORMATION

Polish	EXCELLENT
Symmetry	EXCELLENT
Fluorescence	NONE
Inscription(s)	LABGROWN (167) LG555270593

Comments: HEARTS & ARROWS  
As Grown - No indication of post-growth treatment.  
This Laboratory Grown Diamond was created by  
Chemical Vapor Deposition (CVD) growth process.



December 9, 2022	1.46 CARAT
G	G
VS2	VS2
IDEAL	IDEAL
61.4%	61.4%
55.8%	55.8%
Medium to Slightly Thick (faceted)	Pointed
	EXCELLENT
	EXCELLENT
	NOISE
	LARGESIDE 180°
	LS56527075