



**ELECTRONIC COPY**

**LABORATORY GROWN DIAMOND REPORT**

January 6, 2023  
IGI Report Number **LG560204198**  
Description **LABORATORY GROWN  
DIAMOND**  
Shape and Cutting Style **ROUND BRILLIANT**  
Measurements **7.31 - 7.34 X 4.50 MM**

**GRADING RESULTS**

Carat Weight **1.48 CARAT**  
Color Grade **G**  
Clarity Grade **VVS 1**  
Cut Grade **IDEAL**

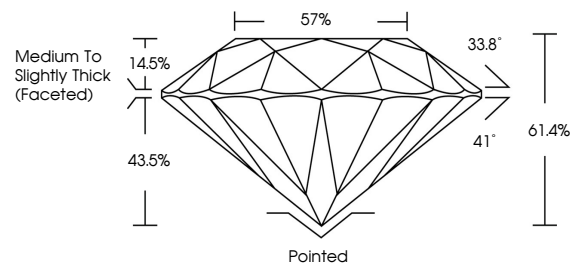
**ADDITIONAL GRADING INFORMATION**

Polish **EXCELLENT**  
Symmetry **EXCELLENT**  
Fluorescence **NONE**  
Inscription(s) **LABGROWN (IGI) LG560204198**

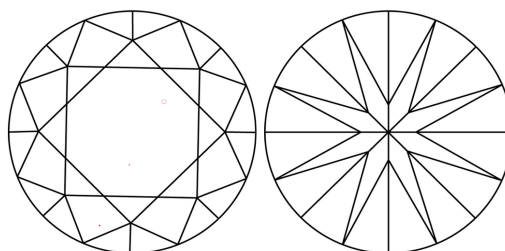
Comments: HEARTS & ARROWS  
As Grown - No indication of post-growth treatment.  
This Laboratory Grown Diamond was created by  
Chemical Vapor Deposition (CVD) growth process.  
Type IIa

LG560204198

**PROPORTIONS**

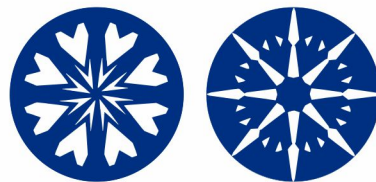


**CLARITY CHARACTERISTICS**



**KEY TO SYMBOLS**

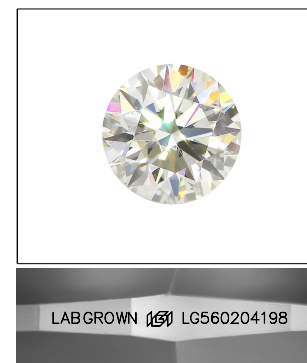
Red symbols indicate internal characteristics.  
Green symbols indicate external characteristics.



www.igi.org

**GRADING SCALES**

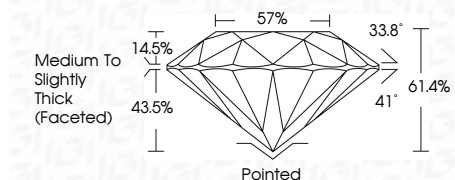
COLOR GRADING SCALE	CL	NC	FT	VLT	LT	
	COLORLESS D-F	NEAR COLORLESS G-J	FAINT K-M	VERY LIGHT N-R	LIGHT S-Z	
CLARITY (10x) GRADING SCALE	FL	IF	VVS	VS	SI	I
	FLAWLESS INTERNALLY FLAWLESS	VERY VERY SLIGHTLY INCLUDED	VERY SLIGHTLY INCLUDED	SLIGHTLY INCLUDED	INCLUDED	



**LASERSCRIBE<sup>SM</sup>**

Sample Image Used

January 6, 2023  
IGI Report Number **LG560204198**  
Description **LABORATORY GROWN  
DIAMOND**  
Shape and Cutting Style **ROUND BRILLIANT**  
Measurements **7.31 - 7.34 X 4.50 MM**  
**GRADING RESULTS**  
Carat Weight **1.48 CARAT**  
Color Grade **G**  
Clarity Grade **VVS 1**  
Cut Grade **IDEAL**



**ADDITIONAL GRADING INFORMATION**

Polish **EXCELLENT**  
Symmetry **EXCELLENT**  
Fluorescence **NONE**  
Inscription(s) **LABGROWN (IGI) LG560204198**

Comments: HEARTS & ARROWS  
As Grown - No indication of post-growth treatment.  
This Laboratory Grown Diamond was created by  
Chemical Vapor Deposition (CVD) growth process.  
Type IIa



**IGI**

January 6, 2023	IGI Report No. <b>LG560204198</b>	1.48 CARAT	<b>G</b>
<b>ROUND BRILLIANT</b>	<b>7.31 - 7.34 X 4.50 MM</b>	Carat Weight	<b>VVS 1</b>
		Color Grade	<b>IDEAL</b>
		Clarity Grade	<b>61.4%</b>
		Cut Grade	<b>57%</b>
		Depth	<b>Medium To Slightly Thick (Faceted)</b>
		Table	<b>Pointed</b>
		Girdle	<b>EXCELLENT</b>
		Culet	<b>EXCELLENT</b>
		Polish	<b>NONE</b>
		Symmetry	<b>LABGROWN (IGI) LG560204198</b>
		Fluorescence	
		Inscription(s)	
		Comments: HEARTS & ARROWS	
		As Grown - No indication of post-growth treatment.	
		This Laboratory Grown Diamond was created by Chemical Vapor Deposition (CVD) growth process.	
		Type IIa	

