



ELECTRONIC COPY

LABORATORY GROWN DIAMOND REPORT

January 6, 2023
IGI Report Number LG560204214
Description LABORATORY GROWN DIAMOND
Shape and Cutting Style ROUND BRILLIANT
Measurements 7.13 - 7.16 X 4.34 MM

GRADING RESULTS

Carat Weight 1.36 CARAT
Color Grade F
Clarity Grade VVS 1
Cut Grade IDEAL

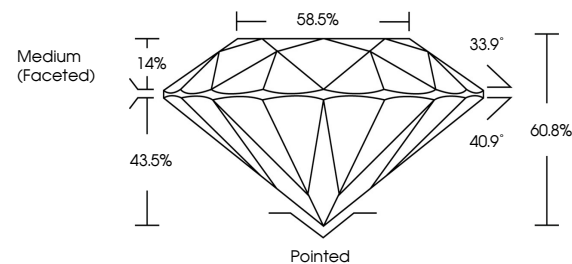
ADDITIONAL GRADING INFORMATION

Polish VERY GOOD
Symmetry EXCELLENT
Fluorescence NONE
Inscription(s) LABGROWN (IGI) LG560204214

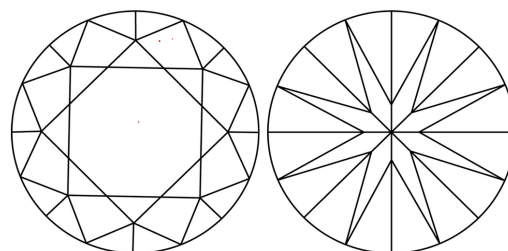
Comments: HEARTS & ARROWS
As Grown - No indication of post-growth treatment.
This Laboratory Grown Diamond was created by Chemical Vapor Deposition (CVD) growth process.
Type IIa

LG560204214

PROPORTIONS



CLARITY CHARACTERISTICS



KEY TO SYMBOLS

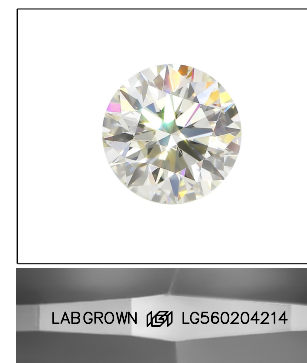
Red symbols indicate internal characteristics.
Green symbols indicate external characteristics.



www.igi.org

GRADING SCALES

Table showing color grading scales (CL, NC, FT, VLT, LT) and clarity (10x) grading scales (FL, IF, VVS, VS, SI, I) with their corresponding descriptions.



LASERSCRIBE SM

Sample Image Used

January 6, 2023
IGI Report Number LG560204214
Description LABORATORY GROWN DIAMOND
Shape and Cutting Style ROUND BRILLIANT
Measurements 7.13 - 7.16 X 4.34 MM

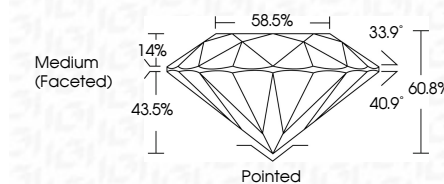
GRADING RESULTS

Carat Weight 1.36 CARAT
Color Grade F
Clarity Grade VVS 1
Cut Grade IDEAL

ADDITIONAL GRADING INFORMATION

Polish VERY GOOD
Symmetry EXCELLENT
Fluorescence NONE
Inscription(s) LABGROWN (IGI) LG560204214

Comments: HEARTS & ARROWS
As Grown - No indication of post-growth treatment.
This Laboratory Grown Diamond was created by Chemical Vapor Deposition (CVD) growth process.
Type IIa



IGI

Summary table of report details: IGI Report No. LG560204214, ROUND BRILLIANT, 7.13 - 7.16 X 4.34 MM, 1.36 CARAT, Color Grade F, Clarity Grade VVS 1, Cut Grade IDEAL, Depth 60.8%, Table 58.5%, Grade Medium (Faceted), Polish Very Good, Symmetry Excellent, Fluorescence None, Inscription(s) LABGROWN (IGI) LG560204214, Comments: HEARTS & ARROWS, As Grown - No indication of post-growth treatment. This Laboratory Grown Diamond was created by Chemical Vapor Deposition (CVD) growth process. Type IIa.