



ELECTRONIC COPY

LABORATORY GROWN DIAMOND REPORT

January 6, 2023
IGI Report Number LG560215305
Description LABORATORY GROWN DIAMOND
Shape and Cutting Style ROUND BRILLIANT
Measurements 7.17 - 7.20 X 4.39 MM

GRADING RESULTS

Carat Weight 1.39 CARAT
Color Grade E
Clarity Grade VVS 1
Cut Grade IDEAL

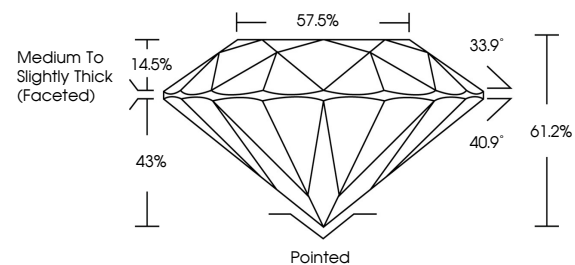
ADDITIONAL GRADING INFORMATION

Polish EXCELLENT
Symmetry EXCELLENT
Fluorescence NONE
Inscription(s) LABGROWN (IGI) LG560215305

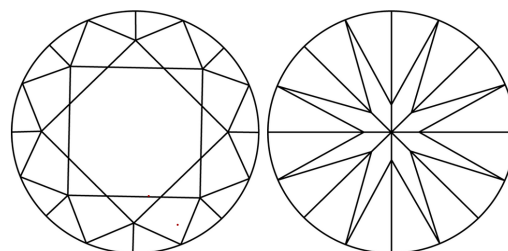
Comments: HEARTS & ARROWS
As Grown - No indication of post-growth treatment.
This Laboratory Grown Diamond was created by Chemical Vapor Deposition (CVD) growth process.
Type IIa

LG560215305

PROPORTIONS

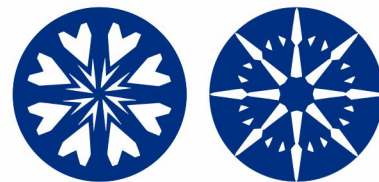


CLARITY CHARACTERISTICS



KEY TO SYMBOLS

Red symbols indicate internal characteristics.
Green symbols indicate external characteristics.

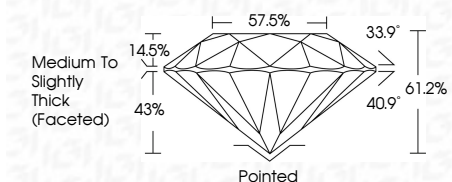


www.igi.org

January 6, 2023
IGI Report Number LG560215305
Description LABORATORY GROWN DIAMOND
Shape and Cutting Style ROUND BRILLIANT
Measurements 7.17 - 7.20 X 4.39 MM
GRADING RESULTS
Carat Weight 1.39 CARAT
Color Grade E
Clarity Grade VVS 1
Cut Grade IDEAL

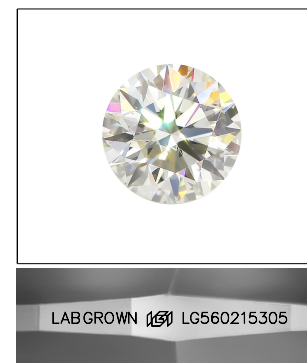
GRADING SCALES

Table showing grading scales for Color (CL), Clarity (10x), and other categories with corresponding grades like CL, NC, FT, VLT, LT, etc.



ADDITIONAL GRADING INFORMATION

Polish EXCELLENT
Symmetry EXCELLENT
Fluorescence NONE
Inscription(s) LABGROWN (IGI) LG560215305
Comments: HEARTS & ARROWS
As Grown - No indication of post-growth treatment.
This Laboratory Grown Diamond was created by Chemical Vapor Deposition (CVD) growth process.
Type IIa



LASERSCRIBE SM
Sample Image Used



January 6, 2023
IGI Report No. LG560215305
ROUND BRILLIANT
7.17 - 7.20 X 4.39 MM
1.39 CARAT
E
VVS 1
IDEAL
61.2%
57.5%
Medium To Slightly Thick (Faceted)
Pointed
EXCELLENT
EXCELLENT
NONE
LABGROWN (IGI) LG560215305
Comments: HEARTS & ARROWS
As Grown - No indication of post-growth treatment.
This Laboratory Grown Diamond was created by Chemical Vapor Deposition (CVD) growth process.
Type IIa