



ELECTRONIC COPY

LABORATORY GROWN DIAMOND REPORT

January 16, 2023
IGI Report Number LG560243388
Description LABORATORY GROWN DIAMOND
Shape and Cutting Style ROUND BRILLIANT
Measurements 9.52 - 9.55 X 5.70 MM

GRADING RESULTS

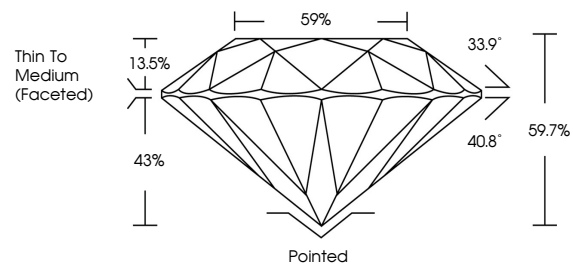
Carat Weight 3.15 CARATS
Color Grade G
Clarity Grade VVS 1
Cut Grade IDEAL

ADDITIONAL GRADING INFORMATION

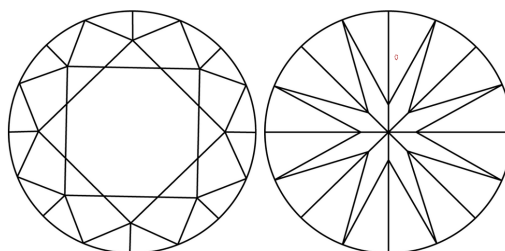
Polish EXCELLENT
Symmetry EXCELLENT
Fluorescence NONE
Inscription(s) LABGROWN (L) LG560243388

Comments: HEARTS & ARROWS
As Grown - No indication of post-growth treatment.
This Laboratory Grown Diamond was created by Chemical Vapor Deposition (CVD) growth process.

PROPORTIONS



CLARITY CHARACTERISTICS



KEY TO SYMBOLS

Red symbols indicate internal characteristics.
Green symbols indicate external characteristics.



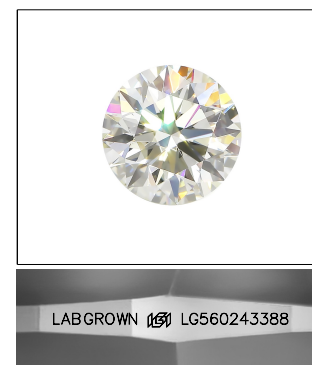
GRADING SCALES

CLARITY

Table mapping clarity grades: IF, VVS 1-2, VS 1-2, SI 1-2, I 1-3 to Internally Flawless, Very Very Slightly Included, Very Slightly Included, Slightly Included, Included.

COLOR

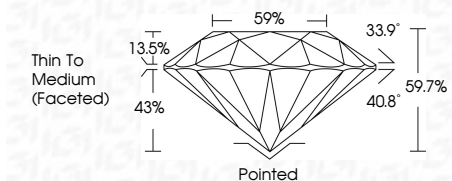
Table mapping color grades: D, E, F, G, H, I, J, Faint, Very Light, Light.



LASERSCRIBE SM

Sample Image Used

January 16, 2023
IGI Report Number LG560243388
Description LABORATORY GROWN DIAMOND
Shape and Cutting Style ROUND BRILLIANT
Measurements 9.52 - 9.55 X 5.70 MM
GRADING RESULTS
Carat Weight 3.15 CARATS
Color Grade G
Clarity Grade VVS 1
Cut Grade IDEAL



ADDITIONAL GRADING INFORMATION

Polish EXCELLENT
Symmetry EXCELLENT
Fluorescence NONE
Inscription(s) LABGROWN (L) LG560243388

Comments: HEARTS & ARROWS
As Grown - No indication of post-growth treatment.
This Laboratory Grown Diamond was created by Chemical Vapor Deposition (CVD) growth process.



Summary of report details including date, report number, measurements, grading results, and contact information.