



**ELECTRONIC COPY**

**LABORATORY GROWN DIAMOND REPORT**

December 26, 2022  
 IGI Report Number **LG561274359**  
 Description **LABORATORY GROWN  
DIAMOND**  
 Shape and Cutting Style **CUT CORNERED RECTANGULAR  
MODIFIED BRILLIANT**  
 Measurements **9.65 X 7.10 X 4.38 MM**

**GRADING RESULTS**

Carat Weight **2.60 CARATS**  
 Color Grade **E**  
 Clarity Grade **VS 1**

**ADDITIONAL GRADING INFORMATION**

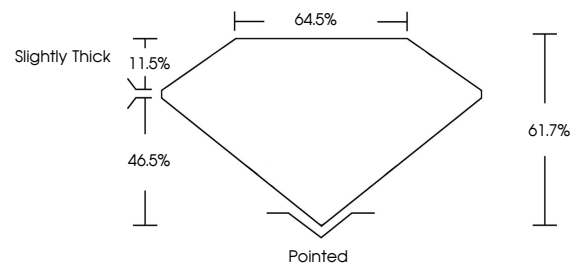
Polish **EXCELLENT**  
 Symmetry **EXCELLENT**  
 Fluorescence **NONE**  
 Inscription(s) **LABGROWN (LGI) LG561274359**

Comments: This Laboratory Grown Diamond was created by Chemical Vapor Deposition (CVD) growth process and may include post-growth treatment. Type IIa

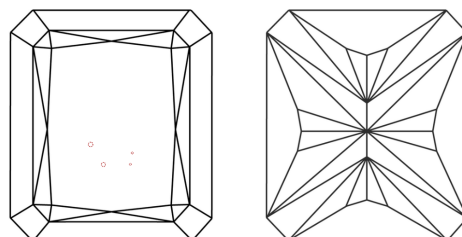
**LABORATORY GROWN DIAMOND REPORT**

**LG561274359**  
 Report verification at [igi.org](http://igi.org)

**PROPORTIONS**



**CLARITY CHARACTERISTICS**



**KEY TO SYMBOLS**

Red symbols indicate internal characteristics.  
 Green symbols indicate external characteristics.

**LABORATORY GROWN  
DIAMOND REPORT**

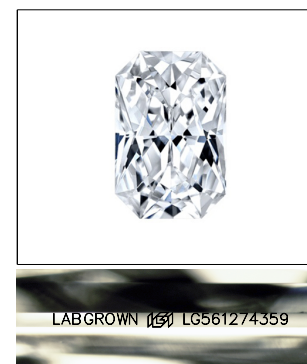
**GRADING SCALES**

**CLARITY**

| IF                  | VVS <sup>1-2</sup>          | VS <sup>1-2</sup>      | SI <sup>1-2</sup> | I <sup>1-3</sup> |
|---------------------|-----------------------------|------------------------|-------------------|------------------|
| Internally Flawless | Very Very Slightly Included | Very Slightly Included | Slightly Included | Included         |

**COLOR**

| D | E | F | G | H | I | J | Faint | Very Light | Light |
|---|---|---|---|---|---|---|-------|------------|-------|
|   |   |   |   |   |   |   |       |            |       |

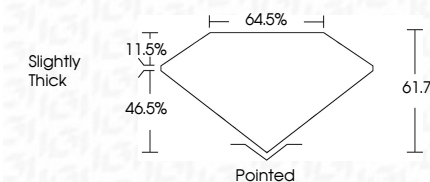


**LASERSCRIBE<sup>SM</sup>**

Sample Image Used

**LABORATORY GROWN DIAMOND REPORT**

December 26, 2022  
 IGI Report Number **LG561274359**  
 Description **LABORATORY GROWN  
DIAMOND**  
 Shape and Cutting Style **CUT CORNERED  
RECTANGULAR MODIFIED  
BRILLIANT**  
 Measurements **9.65 X 7.10 X 4.38 MM**  
**GRADING RESULTS**  
 Carat Weight **2.60 CARATS**  
 Color Grade **E**  
 Clarity Grade **VS 1**



**ADDITIONAL GRADING INFORMATION**

Polish **EXCELLENT**  
 Symmetry **EXCELLENT**  
 Fluorescence **NONE**  
 Inscription(s) **LABGROWN (LGI) LG561274359**

Comments: This Laboratory Grown Diamond was created by Chemical Vapor Deposition (CVD) growth process and may include post-growth treatment. Type IIa



|                       |                           |  |
|-----------------------|---------------------------|--|
| December 26, 2022     | IGI Report No LG561274359 | <b>CUT CORNERED RECT. MODIFIED BRILLIANT</b> |
| 9.65 X 7.10 X 4.38 MM | <b>2.60 CARATS</b>        | <b>E</b>                                     |
| Color Grade           | VS 1                      | 61.7%  |
| Depth                 | 46.5%                     | Slightly Thick                               |
| Table                 | 64.5%                     | Pointed                                      |
| Grades                | EXCELLENT                 | EXCELLENT                                    |
| Culet                 | NONE                      | NONE   |
| Polish                | EXCELLENT                 | EXCELLENT                                    |
| Symmetry              | EXCELLENT                 | EXCELLENT                                    |
| Fluorescence          | NONE                      | NONE   |
| Inscription(s)        | LABGROWN (LGI)            | LG561274359                                  |

Comments: This Laboratory Grown Diamond was created by Chemical Vapor Deposition (CVD) growth process and may include post-growth treatment. Type IIa