



ELECTRONIC COPY

LABORATORY GROWN DIAMOND REPORT

January 12, 2023	
IGI Report Number	LG561281967
Description	LABORATORY GROWN DIAMOND
Shape and Cutting Style	ROUND BRILLIANT
Measurements	7.88 - 7.91 X 4.80 MM

GRADING RESULTS

Carat Weight	1.84 CARAT
Color Grade	F
Clarity Grade	VVS 1
Cut Grade	IDEAL

ADDITIONAL GRADING INFORMATION

Polish	EXCELLENT
Symmetry	EXCELLENT
Fluorescence	NONE

Inscription(s) LABGROWN 13 LG561281967

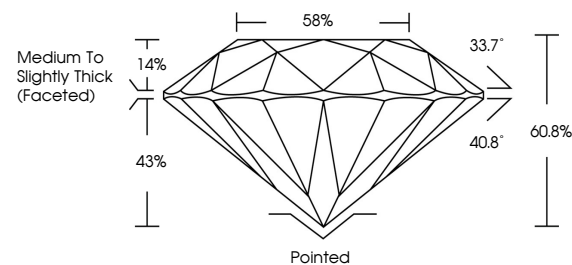
Comments: HEARTS & ARROWS
As Grown - No indication of post-growth treatment.
This Laboratory Grown Diamond was created by
Chemical Vapor Deposition (CVD) growth process.
Type IIa

LABORATORY GROWN DIAMOND REPORT

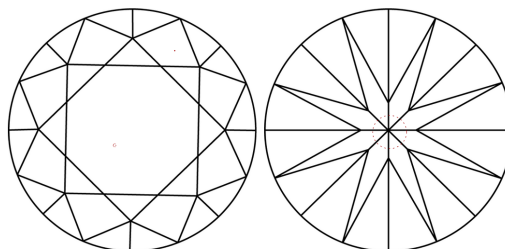
LG561281967

Report verification at igi.org

PROPORTIONS

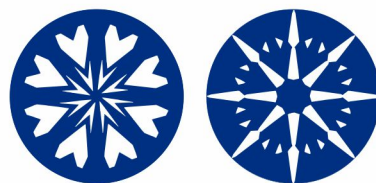


CLARITY CHARACTERISTICS



KEY TO SYMBOLS

Red symbols indicate internal characteristics.
Green symbols indicate external characteristics.



www.igi.org

LABORATORY GROWN DIAMOND REPORT

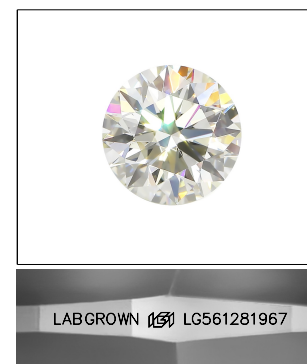
GRADING SCALES

CLARITY

IF	VVS ¹⁻²	VS ¹⁻²	SI ¹⁻²	I ¹⁻³
Internally Flawless	Very Very Slightly Included	Very Slightly Included	Slightly Included	Included

COLOR

D E F G H I J Faint Very Light Light

LASERSCRIBESM

Sample Image Used



© IGI 2020, International Gemological Institute

FD - 10 20

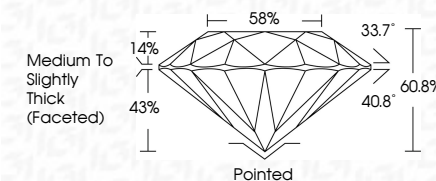
THIS DOCUMENT WAS PRODUCED WITH THE FOLLOWING SECURITY MEASURES: SPECIAL DOCUMENT PAPER, INK SCREENS, WATERMARK, BACKGROUND DESIGNS, HOLOGRAM AND OTHER SECURITY FEATURES NOT LISTED AND DO EXCEED DOCUMENT SECURITY INDUSTRY GUIDELINE

LABORATORY GROWN DIAMOND REPORT

January 12, 2023	
IGI Report Number	LG561281967
Description	LABORATORY GROWN DIAMOND
Shape and Cutting Style	ROUND BRILLIANT
Measurements	7.88 - 7.91 X 4.80 MM

GRADING RESULTS

Carat Weight	1.84 CARAT
Color Grade	F
Clarity Grade	VVS 1
Cut Grade	IDEAL



ADDITIONAL GRADING INFORMATION

Polish	EXCELLENT
Symmetry	EXCELLENT
Fluorescence	NONE
Inscription(s)	LABGROWN (157) LG561281967

Comments: HEARTS & ARROWS
As Grown - No indication of post-growth treatment.
This Laboratory Grown Diamond was created by
Chemical Vapor Deposition (CVD) growth process.
Type IIa



January 12, 2023
GI Report No LG561281967
ROUND BRILLIANT

	Carat Weight	VS 1	1.84 CARAT F
	Color Grade	IDEAL	
	Clarity Grade	60.8%	
	Cut Grade	59%	
	Depth	Medium to Slightly Thick (Faceted)	
	Gable	Poined	
	Table	EXCELLENT	
	Culet	EXCELLENT	
	Polish	NONE	
	Symmetry	LARGELY	
	Fluorescence	(S)	
	Inscriptions		

Comments:
HEARTS & ARROWS
As Grown - No indication of post-growth
treatment.
This Laboratory Grown Diamond was
created by Chemical Vapor Deposition
(CVD) growth process.