

ELECTRONIC COPY

LABORATORY GROWN DIAMOND REPORT

March 31, 2023	
IGI Report Number	LG575381373
Description	LABORATORY GROWN DIAMOND
Shape and Cutting Style	CUT CORNERED RECTANGULAR MODIFIED BRILLIANT
Measurements	7.29 X 5.00 X 3.38 MM

GRADING RESULTS

Carat Weight	1.05 CARAT
Color Grade	E
Clarity Grade	VVS 2

ADDITIONAL GRADING INFORMATION

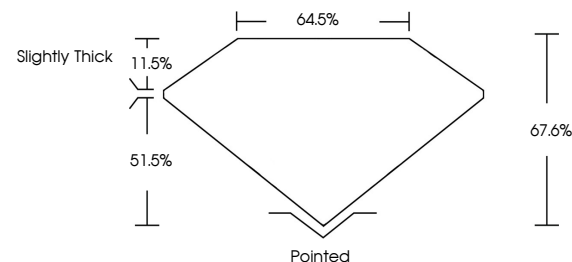
Polish	EXCELLENT
Symmetry	EXCELLENT
Fluorescence	NONE
Inscription(s)	 LG575381373

Comments: This Laboratory Grown Diamond was created by Chemical Vapor Deposition (CVD) growth process and may include post-growth treatment.
Type IIa

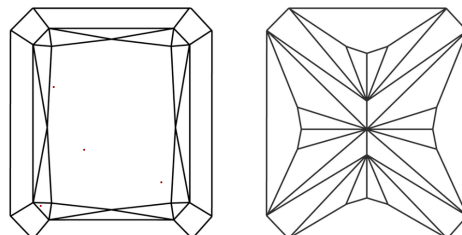
LABORATORY GROWN DIAMOND REPORT

LG575381373
Report verification at [igi.org](https://www.igi.org)

PROPORTIONS



CLARITY CHARACTERISTICS



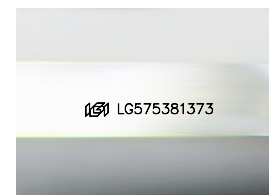
KEY TO SYMBOLS

Red symbols indicate internal characteristics.
Green symbols indicate external characteristics.

LABORATORY GROWN
DIAMOND REPORT

GRADING SCALES

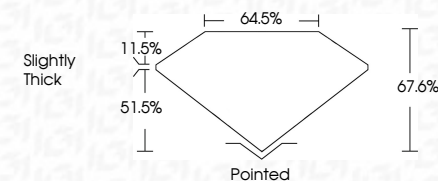
CLARITY									
IF		VVS ¹⁻²			VS ¹⁻²		SI ¹⁻²		I ¹⁻³
Internally Flawless		Very Very Slightly Included			Very Slightly Included		Slightly Included		Included
COLOR									
D	E	F	G	H	I	J	Faint	Very Light	Light




Sample Image Used

LABORATORY GROWN DIAMOND REPORT

March 31, 2023	
IGI Report Number	LG575381373
Description	LABORATORY GROWN DIAMOND
Shape and Cutting Style	CUT CORNERED RECTANGULAR MODIFIED BRILLIANT
Measurements	7.29 X 5.00 X 3.38 MM
GRADING RESULTS	
Carat Weight	1.05 CARAT
Color Grade	E
Clarity Grade	VVS 2



ADDITIONAL GRADING INFORMATION

Polish	EXCELLENT
Symmetry	EXCELLENT
Fluorescence	NONE
Inscription(s)	 LG575381373
<p>Comments: This Laboratory Grown Diamond was created by Chemical Vapor Deposition (CVD) growth process and may include post-growth treatment.</p> <p>Type IIa</p>	



© IGI 2020, International Gemological Institute

FD - 10 20

[illegible]

Comments:
This Laboratory Grown Diamond was created by Chemical Vapor Deposition (CVD) growth process and may include post-growth treatment.