



ELECTRONIC COPY

LABORATORY GROWN DIAMOND REPORT

October 30, 2023	
IGI Report Number	LG596353314
Description	LABORATORY GROWN DIAMOND
Shape and Cutting Style	OVAL BRILLIANT
Measurements	9.24 X 6.59 X 4.13 MM

GRADING RESULTS

Carat Weight	1.57 CARAT
Color Grade	E
Clarity Grade	VVS 1

ADDITIONAL GRADING INFORMATION

Polish	EXCELLENT
Symmetry	EXCELLENT
Fluorescence	NONE
Inscription(s)	 LG596353314

Comments: As Grown - No indication of post-growth treatment.

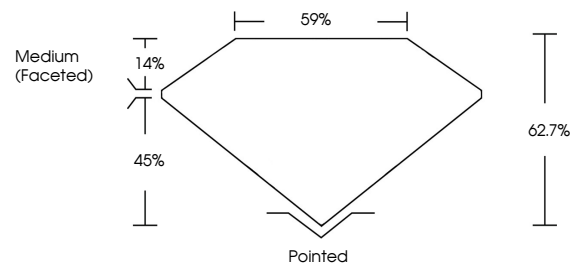
This Laboratory Grown Diamond was created by High Pressure High Temperature (HPHT) growth process.
Type II

LABORATORY GROWN DIAMOND REPORT

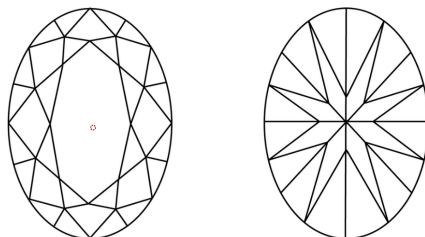
LG596353314

Report verification at igi.org

PROPORTIONS



CLARITY CHARACTERISTICS



KEY TO SYMBOLS

Red symbols indicate internal characteristics.
Green symbols indicate external characteristics.

LABORATORY GROWN
DIAMOND REPORT

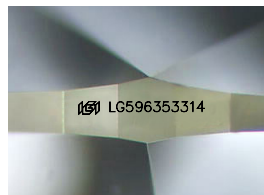
GRADING SCALES

CLARITY

IF	VVS ¹⁻²	VS ¹⁻²	SI ¹⁻²	I ¹⁻³
Internally Flawless	Very Very Slightly Included	Very Slightly Included	Slightly Included	Included

COLOR

D E F G H I J Faint Very Light Light



Sample Image Used



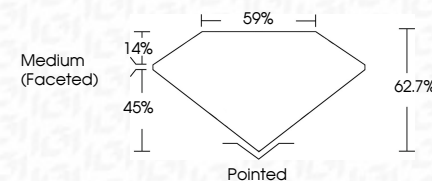
© IGI 2020, International Gemological Institute

FD - 10 20

www.igi.org

LABORATORY GROWN DIAMOND REPORT

October 30, 2023	
IGI Report Number	LG596353314
Description	LABORATORY GROWN DIAMOND
Shape and Cutting Style	OVAL BRILLIANT
Measurements	9.24 X 6.59 X 4.13 MM
GRADING RESULTS	
Carat Weight	1.57 CARAT
Color Grade	E
Clarity Grade	VVS 1



ADDITIONAL GRADING INFORMATION

Polish	EXCELLENT
Symmetry	EXCELLENT
Fluorescence	NONE
Inscription(s)	 LG596353314
Comments: As Grown - No indication of post-growth treatment.	
This Laboratory Grown Diamond was created by High Pressure High Temperature (HPHT) growth process.	
Type II	



IG

October 30, 2023
 LGI Report No LG596353314

2.24 X 6.59 X 4.13 MM	1.57 CARAT	
Carat Weight	VVS 1	Pointed
Color Grade	62.7%	EXCELLENT
Clarity Grade	59%	EXCELLENT
Depth		NONE
Table		
Grade	Medium (Faceted)	
Culet		
Polish		
Symmetry		
Fluorescence		

Comments:
As Grown - No indication of post-growth treatment.
This Laboratory Grown Diamond was created by High Pressure High Temperature (HPHT) growth process.