



ELECTRONIC COPY

LABORATORY GROWN DIAMOND REPORT

September 5, 2023	
IGI Report Number	LG598318261
Description	LABORATORY GROWN DIAMOND
Shape and Cutting Style	ROUND BRILLIANT
Measurements	6.87 - 6.89 X 4.26 MM

GRADING RESULTS

Carat Weight	1.23 CARAT
Color Grade	D
Clarity Grade	VS 1
Cut Grade	IDEAL

ADDITIONAL GRADING INFORMATION

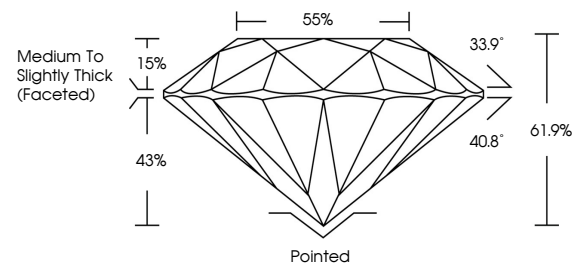
Polish	EXCELLENT
Symmetry	EXCELLENT
Fluorescence	NONE
Inscription(s)	 LG598318261

Comments: HEARTS & ARROWS
As Grown - No indication of post-growth treatment.
This Laboratory Grown Diamond was created by High
Pressure High Temperature (HPHT) growth process.
Type II

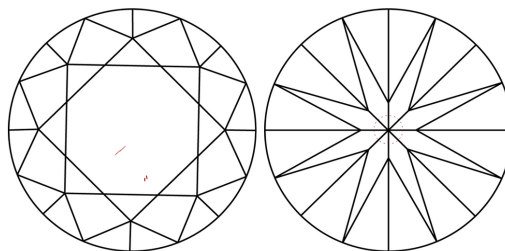
LABORATORY GROWN DIAMOND REPORT

LG598318261
Report verification at igi.org

PROPORTIONS



CLARITY CHARACTERISTICS



KEY TO SYMBOLS

Red symbols indicate internal characteristics.
Green symbols indicate external characteristics.



www.igi.org

LABORATORY GROWN
DIAMOND REPORT

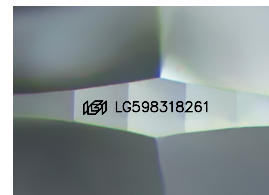
GRADING SCALES

CLARITY

IF	VVS ¹⁻²	VS ¹⁻²	SI ¹⁻²	I ¹⁻³
Internally Flawless	Very Very Slightly Included	Very Slightly Included	Slightly Included	Included

COLOR

D E F G H I J Faint Very Light Light



Sample Image Used



© IGI 2020, International Gemological Institute

FD - 10 20

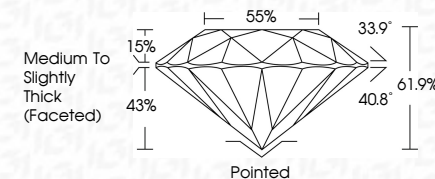
THIS DOCUMENT WAS PRODUCED WITH THE FOLLOWING SECURITY MEASURES: SPECIAL DOCUMENT PAPER, INK SCREENS, WATERMARK BACKGROUND DESIGNS, HOLOGRAM, AND OTHER SECURITY FEATURES NOT LISTED AND DO EXCEED DOCUMENT SECURITY INDUSTRY GUIDELINES.

LABORATORY GROWN DIAMOND REPORT

September 5, 2023	
IGI Report Number	LG598318261
Description	LABORATORY GROWN DIAMOND
Shape and Cutting Style	ROUND BRILLIANT
Measurements	6.87 - 6.89 X 4.26 MM

GRADING RESULTS

Carat Weight	1.23 CARAT
Color Grade	D
Clarity Grade	VS 1
Cut Grade	IDEAL



ADDITIONAL GRADING INFORMATION

Polish	EXCELLENT
Symmetry	EXCELLENT
Fluorescence	NONE
Inscription(s)	151 LG598318261

Comments: HEARTS & ARROWS
As Grown - No indication of post-growth treatment.
This Laboratory Grown Diamond was created by High
Pressure High Temperature (HPHT) growth process.
Type II



September 5, 2023	1.23 CARAT	D	VS 1	Polished	EXCELLENT EXCELLENT NONE #691 LG5993 1261
GI Report No LG5993 18261			IDEAL		
ROUND BRILLIANT			61.0%		
			55%		
			Medium to slightly Thick (Faceted)		
	1.87 - 4.89 X 4.26 MM				
	Carat Weight	Color Grade	Clarity Grade	Cut Grade	
				Depth	
				Table	
				Girdle	
				Culet	
				Polish	
				Symmetry	
				Fluorescence	
				Inscriptions	
Comments: -HEART & ARROW -No indication of post-growth treatment. This Laboratory Grown Diamond was created by High Pressure High Temperature (HPHT) growth process.					