



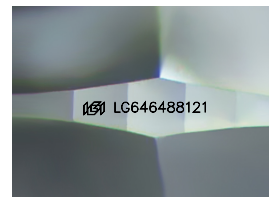
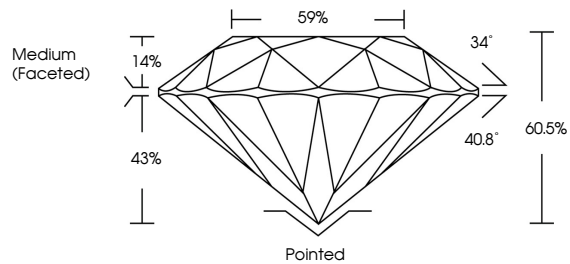
**INTERNATIONAL
GEMOLOGICAL
INSTITUTE**

ELECTRONIC COPY

LABORATORY GROWN DIAMOND REPORT

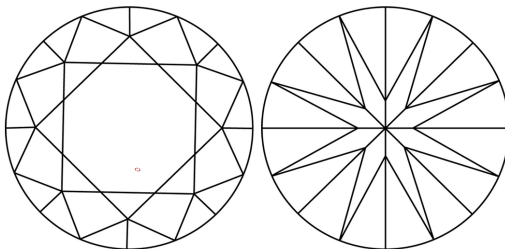
LG646488121
Report verification at [igi.org](https://www.igi.org)

PROPORTIONS



Sample Image Used

CLARITY CHARACTERISTICS



KEY TO SYMBOLS

Red symbols indicate internal characteristics.
Green symbols indicate external characteristics.

COLOR

D E F G H I J Faint Very Light Light

CLARITY

IF	WVS ¹⁻²	VS ¹⁻²	SI ¹⁻²	I ¹⁻³
Internally Flawless	Very Very Slightly Included	Very Slightly Included	Slightly Included	Included



© IGI 2020, International Gemological Institute

FD - 10 20

www.igi.org

LABORATORY GROWN DIAMOND REPORT



August 6, 2024

IGI Report Number **LG646488121**

Description	LABORATORY GROWN DIAMOND
-------------	--------------------------

Shape and Cutting Style **ROUND BRILLIANT**

Measurements **8.24 - 8.29 X 5.01 MM**

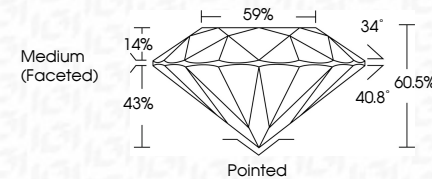
GRADING RESULTS

Carat Weight **2.10 CARATS**

Color Grade	E
-------------	---

Clarity Grade **VVS 2**

Cut Grade **IDEAL**



ADDITIONAL GRADING INFORMATION

Polish **EXCELLENCE**Symmetry **EXCELLENCE**

Fluorescence NONI

Inscription(s) LG64648812

Comments: This Laboratory Grown Diamond was created by Chemical Vapor Deposition (CVD) growth process.
Type IIa



IG

August 6, 2024	IGI Report No. IGS4488121	2.10 CARATS	VVS 2	Ported	
ROUND BRILLIANT			IDEAL	EXCELLENT	
			60.5%	EXCELLENT	
			59%	NONE	
			Medium (Faceted)		IGI IGS4488121
6.24 - 6.29 X 5.01 MM					
Color Weight					
Carat Grade					
Clarity Grade					
Cut Grade					
Depth					
Table					
Girdle					
Culet					
Polish					
Symmetry					
Fluorescence					
Inscriptions(s)					

Comments:
 Created by Gemmy Diamond was
 created by Gemmy Vapor Deposition
 (VD) growth process.
 Type IIa