



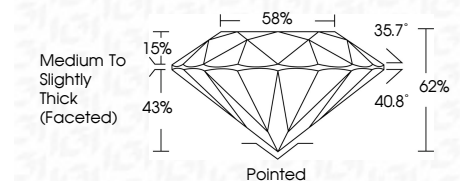
ELECTRONIC COPY

LG650495429
Report verification at igi.org



September 2, 2024
IGI Report Number LG650495429
Description LABORATORY GROWN DIAMOND
Shape and Cutting Style ROUND BRILLIANT
Measurements 9.92 - 9.98 X 6.17 MM

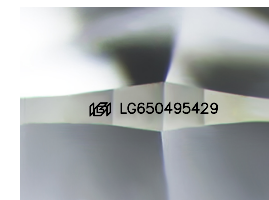
GRADING RESULTS
Carat Weight 3.83 CARATS
Color Grade E
Clarity Grade VS 1
Cut Grade IDEAL



ADDITIONAL GRADING INFORMATION
Polish EXCELLENT
Symmetry EXCELLENT
Fluorescence NONE
Inscription(s) IGI LG650495429
Comments: This Laboratory Grown Diamond was created by Chemical Vapor Deposition (CVD) growth process. Type IIa

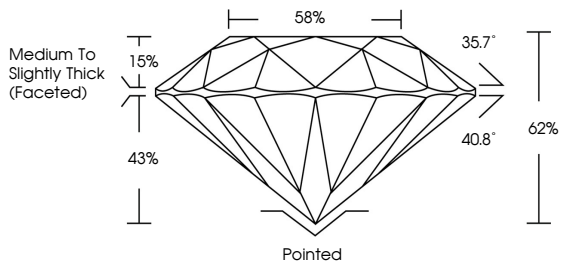


September 2, 2024
IGI Report No LG650495429
ROUND BRILLIANT
9.92 - 9.98 X 6.17 MM
3.83 CARATS E
Color Grade VS 1 IDEAL
Clarity Grade VS 1 IDEAL
Depth 62%
Table 58%
Medium To Slightly Thick (Faceted)
Cutler Pointed
Polish EXCELLENT
Symmetry EXCELLENT
Fluorescence NONE
Inscription(s) IGI LG650495429
Comments: This Laboratory Grown Diamond was created by Chemical Vapor Deposition (CVD) growth process. Type IIa

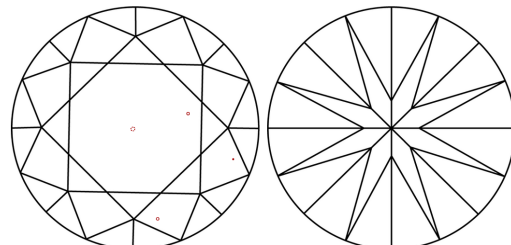


Sample Image Used

PROPORTIONS



CLARITY CHARACTERISTICS



KEY TO SYMBOLS
Red symbols indicate internal characteristics.
Green symbols indicate external characteristics.

COLOR

Table with color grades: D, E, F, G, H, I, J, Faint, Very Light, Light

CLARITY

Table with clarity grades: IF, VS 1-2, VS 1-2, SI 1-2, I 1-3, Internally Flawless, Very Very Slightly Included, Very Slightly Included, Slightly Included, Included



September 2, 2024
IGI Report Number LG650495429
Description LABORATORY GROWN DIAMOND
Shape and Cutting Style ROUND BRILLIANT
Measurements 9.92 - 9.98 X 6.17 MM

GRADING RESULTS
Carat Weight 3.83 CARATS
Color Grade E
Clarity Grade VS 1
Cut Grade IDEAL

ADDITIONAL GRADING INFORMATION
Polish EXCELLENT
Symmetry EXCELLENT
Fluorescence NONE
Inscription(s) IGI LG650495429

Comments: This Laboratory Grown Diamond was created by Chemical Vapor Deposition (CVD) growth process. Type IIa