



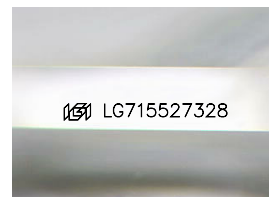
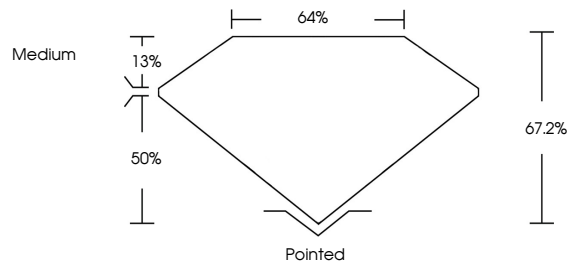
**INTERNATIONAL  
GEMOLOGICAL  
INSTITUTE**

**ELECTRONIC COPY**

## LABORATORY GROWN DIAMOND REPORT

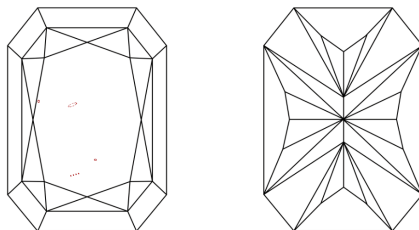
LG715527328  
Report verification at [igi.org](https://igi.org)

## PROPORTIONS



Sample Image Used

## CLARITY CHARACTERISTICS



## KEY TO SYMBOLS

Red symbols indicate internal characteristics.  
Green symbols indicate external characteristics.

**COLOR**

D E F G H I J Faint Very Light Light

## CLARITY

IF      WS<sup>1-2</sup>      VS<sup>1-2</sup>      SI<sup>1-2</sup>      I<sup>1-3</sup>

Internally Flawless	Very Very Slightly Included	Very Slightly Included	Slightly Included	Included
------------------------	--------------------------------	---------------------------	----------------------	----------

## LABORATORY GROWN DIAMOND REPORT



June 14, 2025

IGI Report Number **LG715527328**

Description	LABORATORY GROWN DIAMOND
-------------	--------------------------

Shape and Cutting Style

CUT CORNERED  
RECTANGULAR MODIFIED  
BRILLIANT

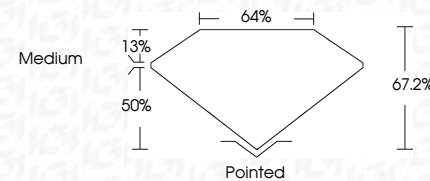
Measurements **8.81 X 6.31 X 4.24 MM**

## GRADING RESULTS

Carat Weight **2.03 CARATS**

Color Grade E

Clarity Grade VS 1



### ADDITIONAL GRADING INFORMATION

Polish **EXCELLENT**

Symmetry **EXCELLENT**

Fluorescence **NONE**Inscription(s)  LG715527328

Comments: This Laboratory Grown Diamond was created by Chemical Vapor Deposition (CVD) growth process.  
Type IIa



IG



© IGI 2020, International Gemological Institute

FD - 10 20

**www.igi.org**

THIS DOCUMENT WAS PRODUCED WITH THE FOLLOWING SECURITY MEASURES: SPECIAL DOCUMENT PAPER, INK SCREENS, WATERMARK, BACKGROUND DESIGNS, HOLOGRAM AND OTHER SECURITY FEATURES NOT LISTED AND DO EXCEED DOCUMENT SECURITY INDUSTRY GUIDELINES

June 14, 2025	Report No LG715627328	2.03 CARATS	VS 1	Pointed
CUT CORNERED RECT. MODIFIED BRILLIANT			61.2%	EXCELLENT
			64%	EXCELLENT
			Medium	NONE
				Serial 62715627328
3.81 X 5.31 X 4.24 MM				
Carat Weight				
Color Grade				
Clarity Grade				
Depth				
Table				
Grade				
Culet				
Polish				
Symmetry				
Fluorescence				
Measurements (mm)				

**Comments:**  
This Laboratory Grown Diamond was  
created by Chemical Vapor Deposition  
(CVD) growth process.